



**PROJECT GROUNDWORK**  
your pipeline to clean water

# We Need Your Input...

*to make our rivers and streams cleaner and healthier.*



## Community Design Workshop #2 Lick Run Alternative Project

Wednesday, October 26, 2011  
6:30 - 9:00 p.m.

*(Open House from 6-6:30 p.m. for new attendees and interested others)*

**Gilbert A. Dater Montessori**  
(Elementary School)

2840 Boudinot Avenue, Cincinnati, OH 45238  
*Map on back.*

Interested in touring the Lick Run Watershed?  
Join us for early evening tours on October 13th and 18th.  
Want to help clean up St. Clair Park in South Fairmount?  
Join us for Make a Difference Day on October 22nd.  
To RSVP for the tours or the park cleanup, email us at  
MSD.Communications@cincinnati-oh.gov or call 244-1300.

### Please Join Us . . .

On Wednesday, October 26, 2011, the Metropolitan Sewer District of Greater Cincinnati (MSD) will host the second of three "Community Design Workshops" to help shape the proposed Lick Run Alternative project.

Please join us to provide input on *design concepts for the urban waterway* in South Fairmount. The workshop will also cover draft stormwater management guidelines and land development principles for the overall watershed. All were developed with input from Community Design Workshop #1.

The meeting will begin promptly at 6:30 p.m. with a presentation, followed by small group sessions to review and discuss a series of design options. An optional open house will be held from 6-6:30 p.m. **No RSVPs are necessary.** You do not need to have attended the first workshop to attend this one. We encourage your participation and input at any stage of the process.

### What's the Lick Run Alternative?

The Lick Run project – located in South Fairmount and portions of East and West Price Hill and Westwood – is a series of underground storm sewers and natural, aboveground waterways to transport stormwater and natural drainage to the Mill Creek. This project would eliminate about 800 million gallons of combined sewer overflows (CSOs) annually. It is an "alternative" to a deep, underground storage tunnel and enhanced high rate treatment facility.

The central element of this alternative project would be an urban waterway in South Fairmount between Queen City and Westwood avenues east of White Street.



For more information about the Lick Run project and to view results from the Lick Run Community Design Workshop #1, please visit [www.projectgroundwork.org/lickrun](http://www.projectgroundwork.org/lickrun). You can also contact MaryLynn Lodor at (513) 244-5535 or send an email to [MSD.Communications@cincinnati-oh.gov](mailto:MSD.Communications@cincinnati-oh.gov).

MSD  
1600 Gest Street  
Cincinnati, OH 45204

# LICK RUN WATERSHED MASTER PLAN

Community Design Workshop #2

October 26, 2011



## Development of a Lick Run Master Plan

### Workshop #1 (August)

- Visual preference surveys

### Workshop #2 (October)

- Review alternatives and concepts

### Workshop #3 (early 2012)

- Review Preliminary Master Plan

### Draft Master Plan

- Submittal to Policy Makers for Consideration



## Agenda

Overview from Design Workshop #1

Design Team will share:

- Technical challenges & opportunities
- Concepts based on community input from Design Workshop #1

Record feedback on strengths & weaknesses of concepts

Report out from breakout groups (time permitting)



## Community Design Workshop #2

- Overview from Design Workshop #1
- Design Team will share:
  - Technical challenges & opportunities
  - Concepts based on community input from Design Workshop #1
- Record feedback on strengths & weaknesses of concepts
- Use feedback to incorporate strengths into preliminary Lick Run Master Plan (Winter 2012)



## Consent Decree

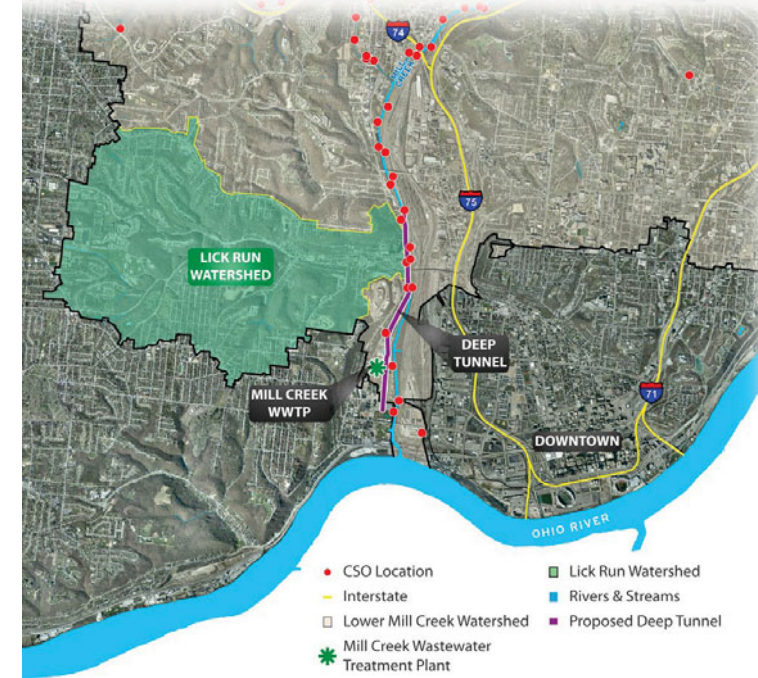
The Consent Decree mandates that MSD:

- (1) Capture, treat, or remove at least 85% of the 14 billion gallons of annual overflows from combined sewers (CSOs)
- (2) Eliminate all sanitary sewer overflows (SSOs)



## “Default” Solution

The “default” solution specified in MSD’s Consent Decree is an underground storage tunnel parallel to Mill Creek.

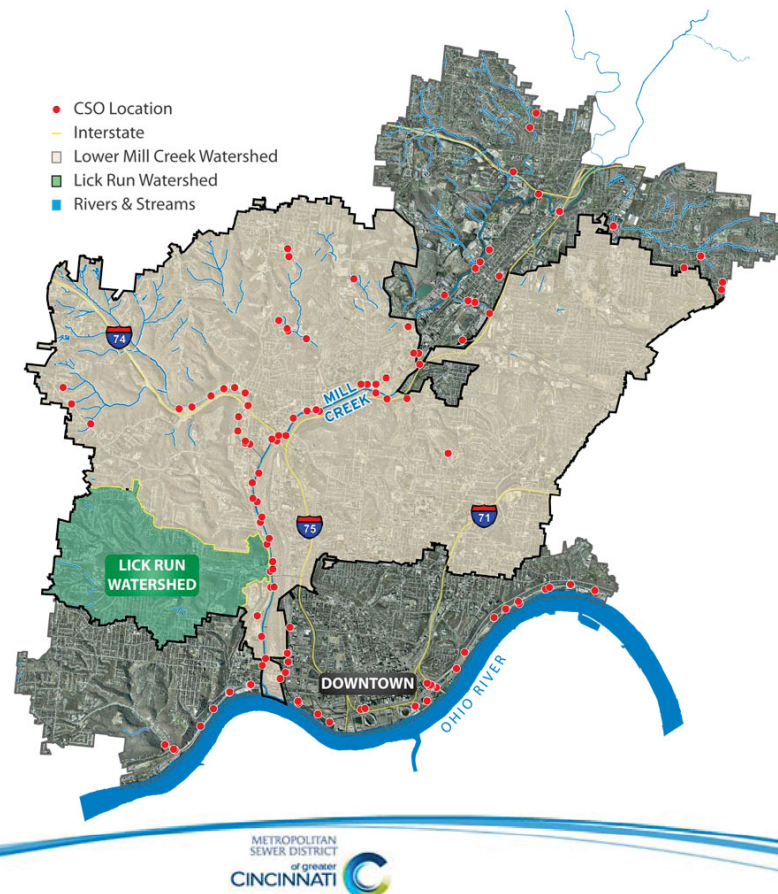


Estimated cost (in 2006 dollars)

**\$244 million**

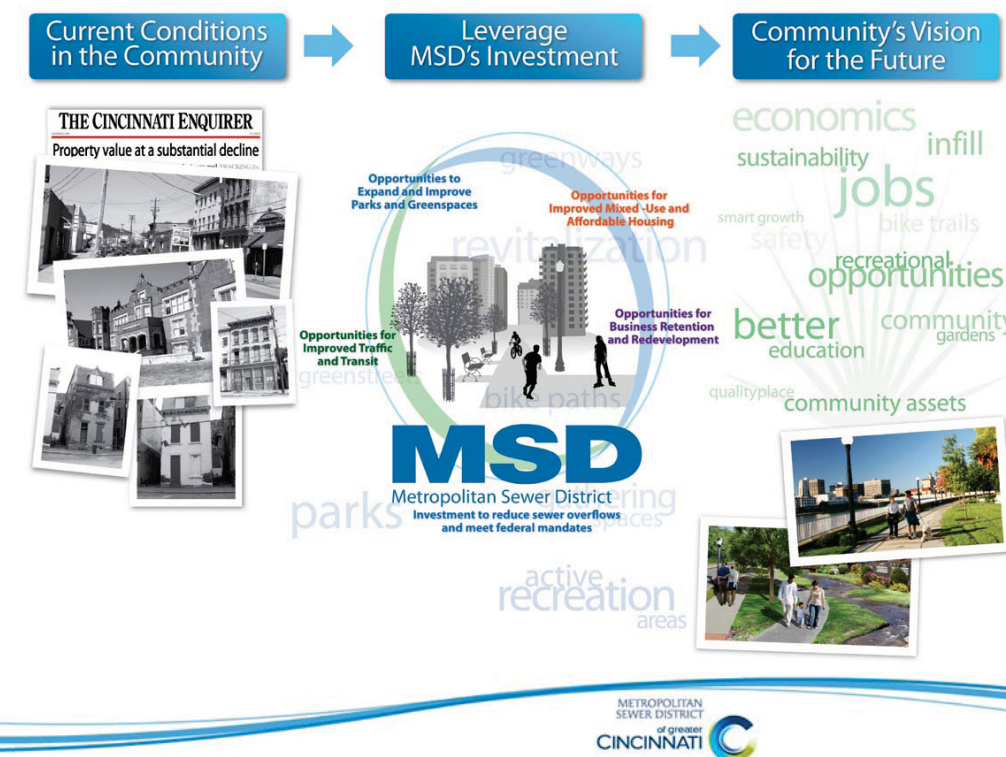
## Focus on the Lower Mill Creek Watershed

MSD is focusing on watersheds within the Lower Mill Creek that experience high volumes of CSOs.

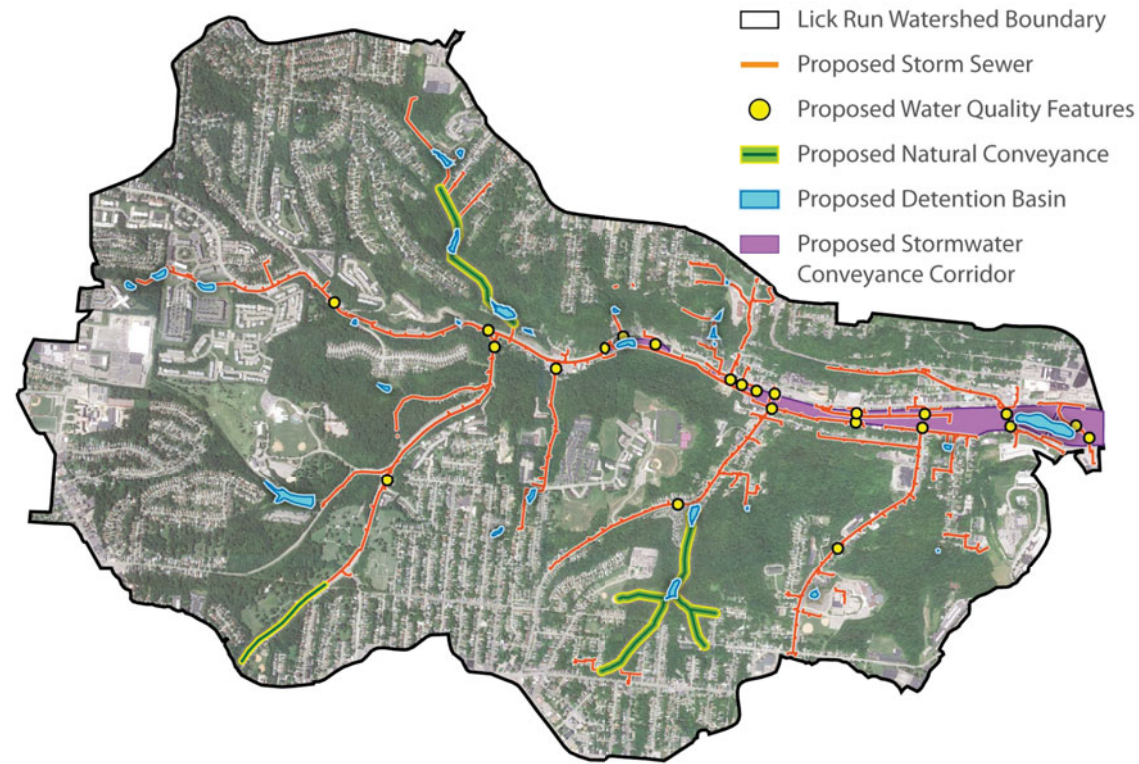


## Sustainable Solutions

MSD is working to create a more sustainable model for meeting CSO compliance mandates.



# Sustainable Solutions: Lick Run Watershed



# Community Design Workshop #1

August 11, 2011  
Roberts Paideia Academy



## Break-out Sessions



### Introduction

Facilitators provided a brief overview of the content and objectives of the break-out session

### Visual Preference Survey

Facilitators explained VPS displays

### Questions

Attendees responded to questions to provide feedback about priorities, ideas, and concerns



**A. WATERWAY CHARACTER** (pick all that apply)

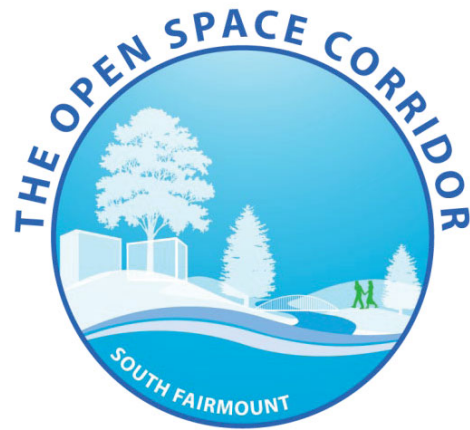
**THE OPEN SPACE CORRIDOR**  
LICK RUN WATERSHED Visual Preference Survey

**VISUAL PREFERENCE SURVEY SHEET**

THE OPEN SPACE CORRIDOR	COMMENTS
<b>A. WATERWAY CHARACTER</b> (pick all that apply) Natural 1 2 3 4 5 6 Urban 7 8 9 10 11 12	
<b>B. WATER QUALITY FEATURES</b> (pick all that apply) 1 2 3 4 5 6	
<b>C. SPECIAL WATER FEATURES</b> (pick all that apply) 1 2 3 4 5 6	
<b>D. GATHERING SPACES</b> (pick two from each row) Personal 1 2 3 4 5 6 Group Open Landscape 1 2 3 4 5 6 Urban	
<b>E. RECREATION TYPES</b> (pick all that apply) 1 2 3 4 5 6 7 8 9 10 11 12 13	

**QUESTIONS**

- Which of the following statements best describes you? (All in those that apply)
- The proposed urban waterway as a central feature could benefit the community. (circle one)
- The potential open space corridor could benefit me because: (circle one)
- What are the most important existing open space areas and recreation facilities in the neighborhood?
- Should existing open space areas and recreation facilities be improved and/or new uses be added? If so, how?
- What is your favorite open space or park within the Cincinnati/Hamilton County region? Please explain. (you can list more than one)



“Make Lick Run beautiful and exciting and bring it into a very urban setting, where many people can enjoy it.”

- Citizen employed in South Fairmount

gathering spaces  
 urban natural  
 water community  
 functional



Waterway Character



Natural-looking waterway that is compatible with an urban setting.

Water Quality Features



Well-planted, green infrastructure features to improve water quality.



Special Water Features



In-stream water features like mini waterfalls, pools and riffles; interactive elements.

Gathering Spaces & Recreational Uses



Open gathering spaces that allow for passive recreation and for community events. An assortment of active recreational uses, with an emphasis on bike and pedestrian trails.



pedestrian character  
 street trees  
 neighborhood business  
 historic green

“Focus on destinations, safety, walkability, local foods and community amenities.”

- South Fairmount Resident

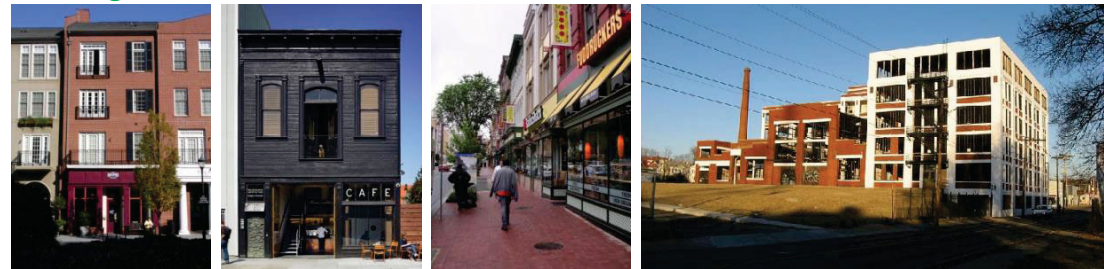


### Architectural Types & Styles



Architectural types and styles should primarily be historic and traditional with the potential for well-integrated modern architecture.

### Building Uses



Respondents preferred mixing uses as part of a vibrant live/work zone, reusing existing buildings where possible, and including basic services (e.g., grocery store, pharmacy) in the business district.



"Historic buildings are important, but it is also about the people, the culture."

-Citizen's comment during break-out session

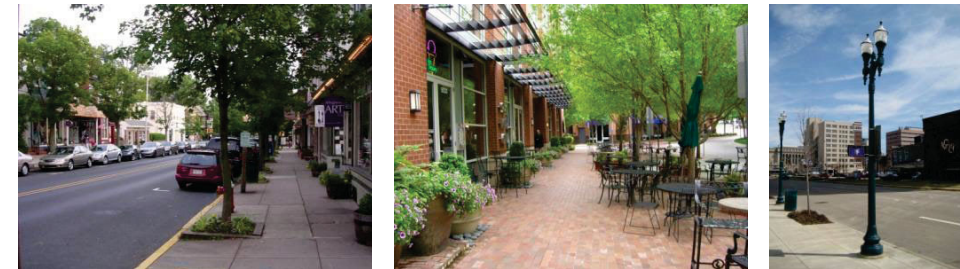
San Antonio Church  
Little Italy  
St. Francis Hospital  
Harrison  
Italian  
Westwood Railroad  
German  
Westwood Avenue  
Annie Oakley gun show  
Lunkenheimer

### Parking



Parking needs in the business district would be best served by a mixture of on-street and surface lots integrated between buildings.

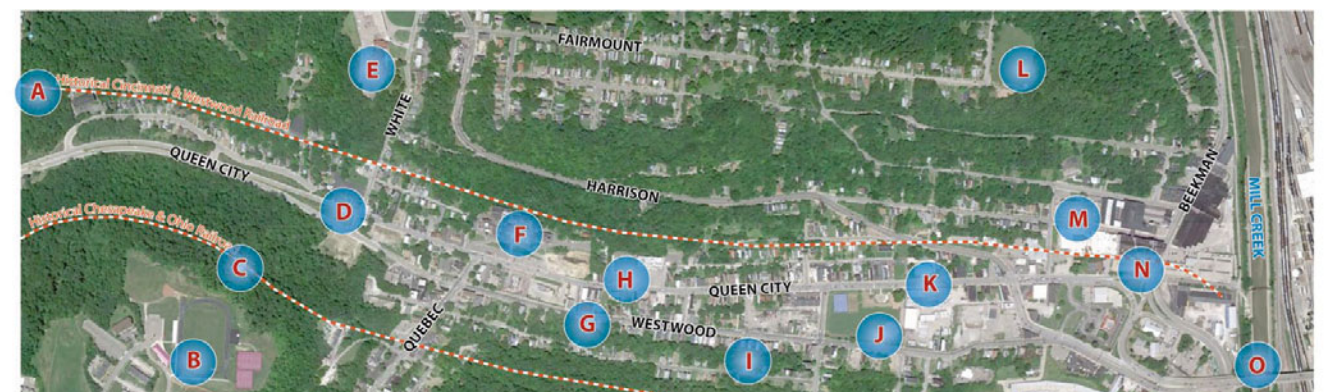
### Streets



Respondents preferred neighborhood-scale street corridors with spaces for gathering, improved lighting, and plenty of amenities. **Nearly all respondents said existing traffic patterns need to change for the business district to be successful.**

- A Cincinnati & Westwood Railroad
- B Panther Athletic Complex
- C C&O Railroad
- D San Antonio Church
- E Central Fairmount School
- F St. Francis Court Apartments
- G Vitt & Sterner Funeral Home
- H Orion Academy

- I Row Houses on Westwood
- J South Fairmount Recreation Area
- K Water Works Pumping Station
- L St. Clair Park
- M Theodore Roosevelt School
- N Lunkenheimer Factory
- O Western Hills Viaduct





natural  
 Keep development green  
 hillsides  
 trees  
 bike lanes

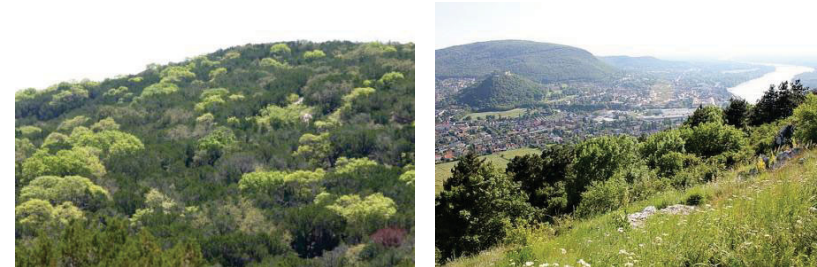
“Green planning should be the overall vision for the community.”  
 - South Fairmount Resident

### Green Planning Principles



Integration of green planning principles for sustainable stormwater management.

### Natural Resources



Preservation and responsible management of the watershed’s physical assets (e.g., forested hillsides, parks, and open spaces)

### Connecting different areas of the watershed



Complete streets concepts, pedestrian safety improvements, and accessible trail networks

### Aesthetics



Natural materials like wood and stone; structures well integrated with the watershed’s unique physical characteristics.

## Design Team Overview

Technical challenges & opportunities

Concepts based on community input from  
 Community Design Workshop #1

# Overview

## Lick Run Master Plan

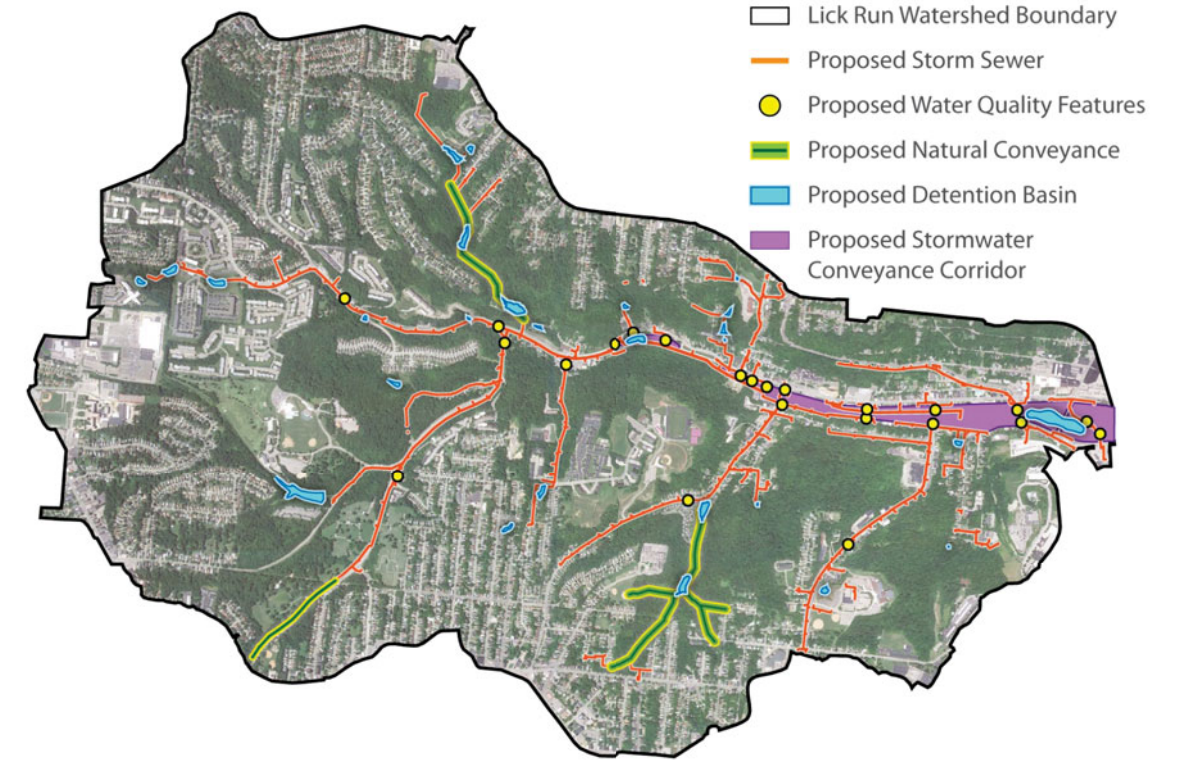
### Long-term Vision: Watershed-Wide Opportunities

- Watershed Planning
- Trail Network
- Urban Design Analysis
- Transportation Network

### Near-term Vision: Proposed Urban Waterway

- Physical Constraints
- Concept Alternatives

# Lick Run Master Plan

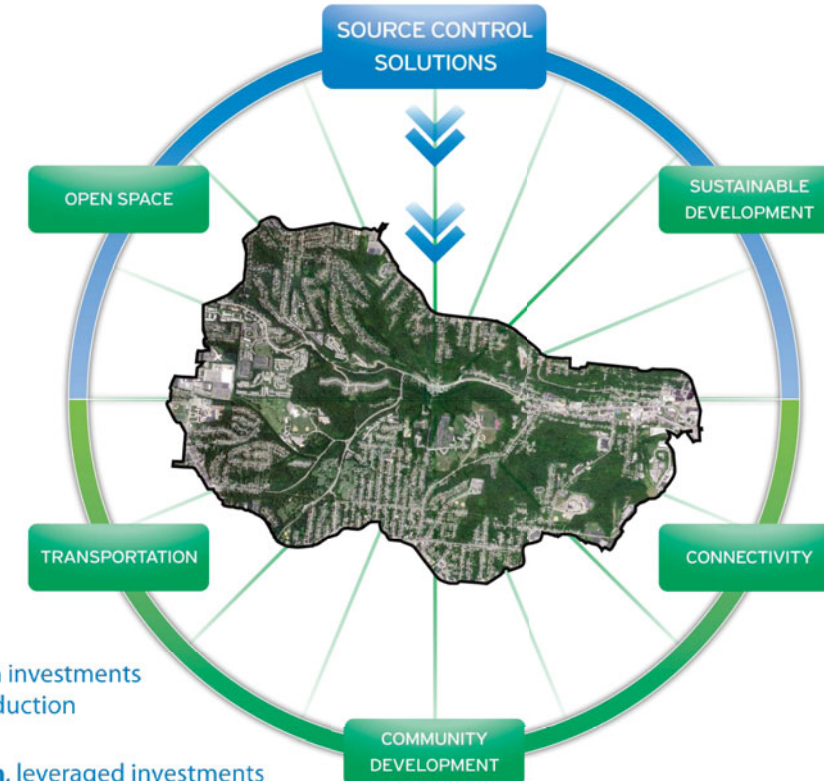


# Lick Run Master Plan



■ Near-term investments for CSO reduction

# Lick Run Master Plan

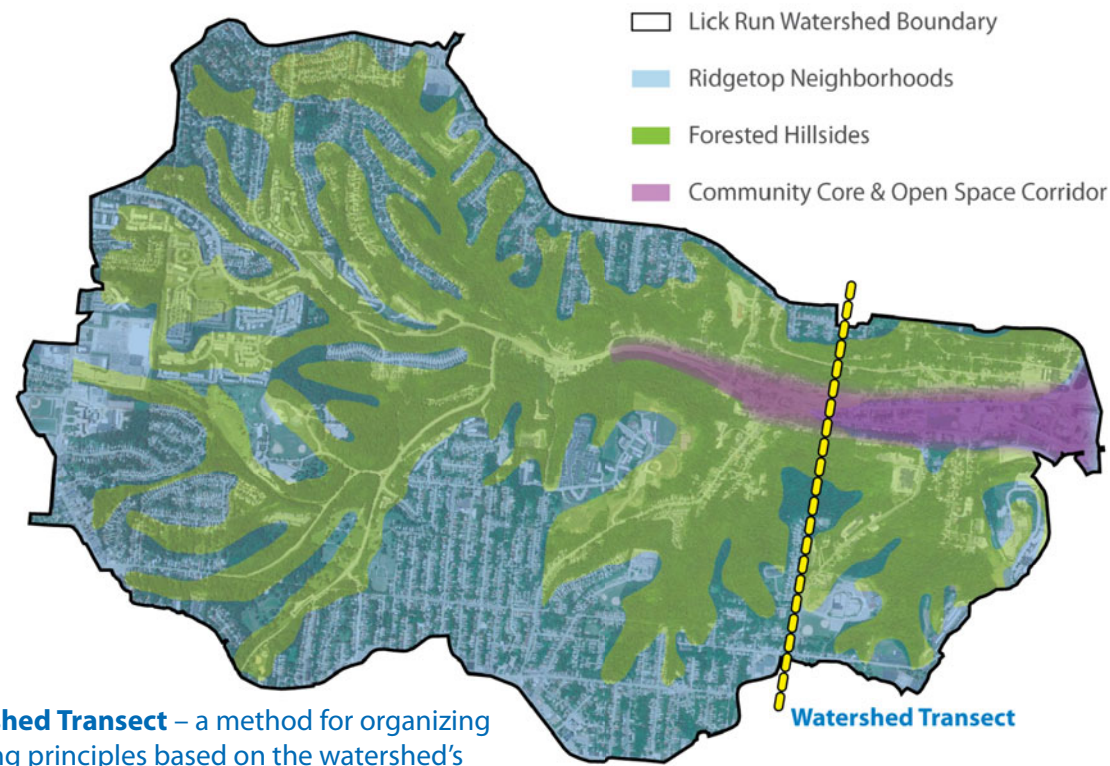


■ Near-term investments for CSO reduction

■ Long-term, leveraged investments through partnerships and collaboration



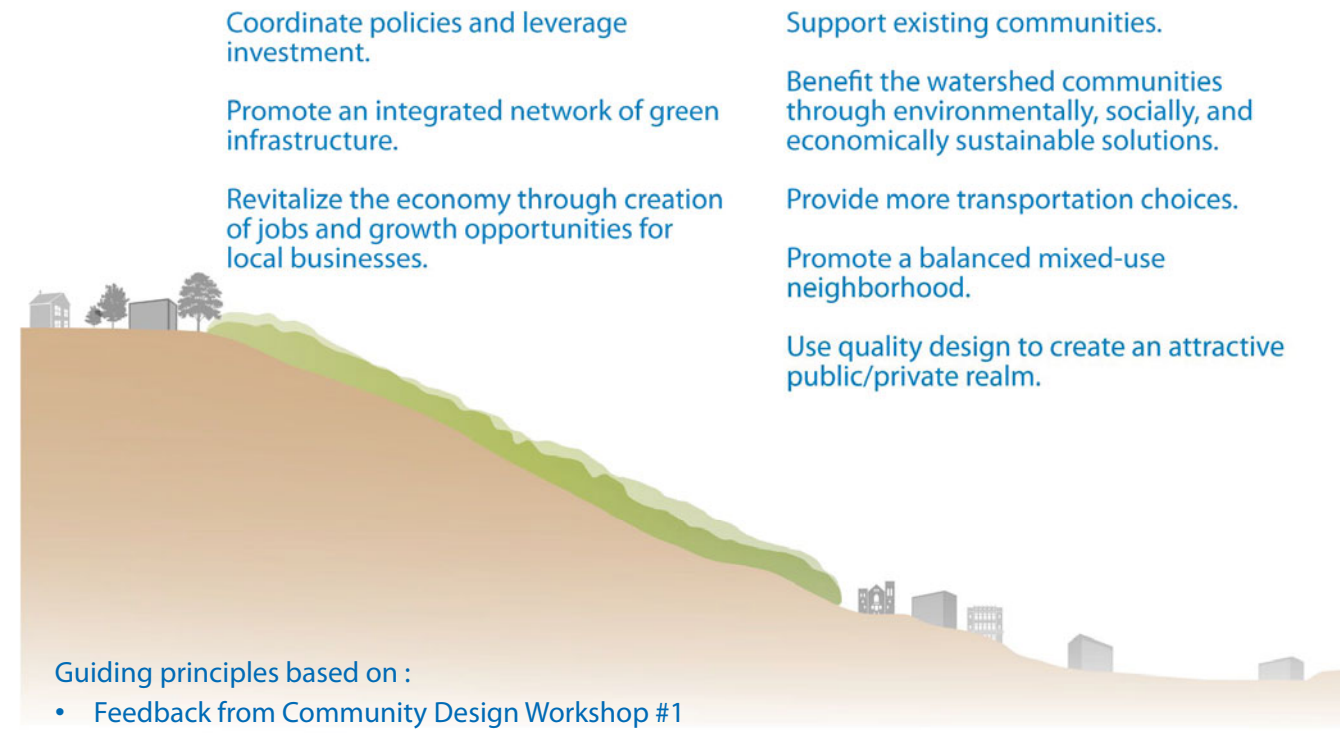
# Watershed Planning: Guiding Principles



**Watershed Transect** – a method for organizing planning principles based on the watershed's unique physical characteristics



# Watershed Planning: Guiding Principles



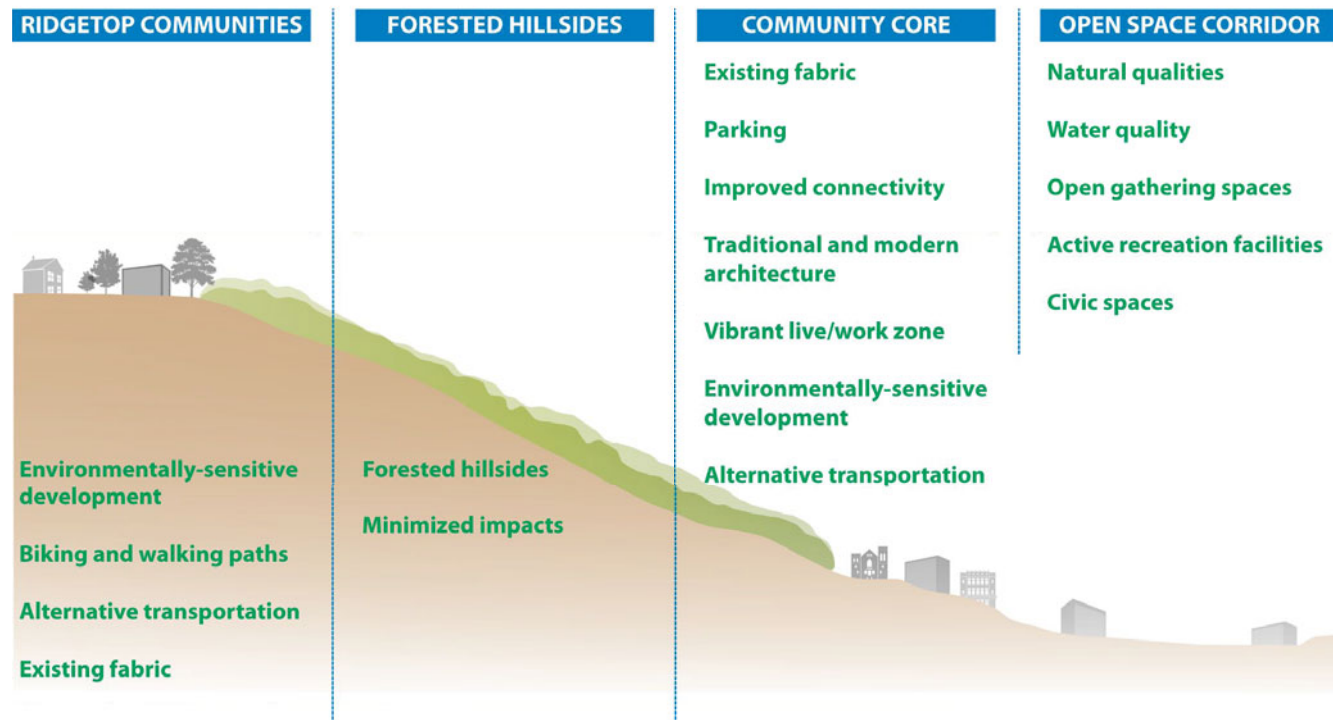
- Coordinate policies and leverage investment.
- Promote an integrated network of green infrastructure.
- Revitalize the economy through creation of jobs and growth opportunities for local businesses.
- Support existing communities.
- Benefit the watershed communities through environmentally, socially, and economically sustainable solutions.
- Provide more transportation choices.
- Promote a balanced mixed-use neighborhood.
- Use quality design to create an attractive public/private realm.

Guiding principles based on :

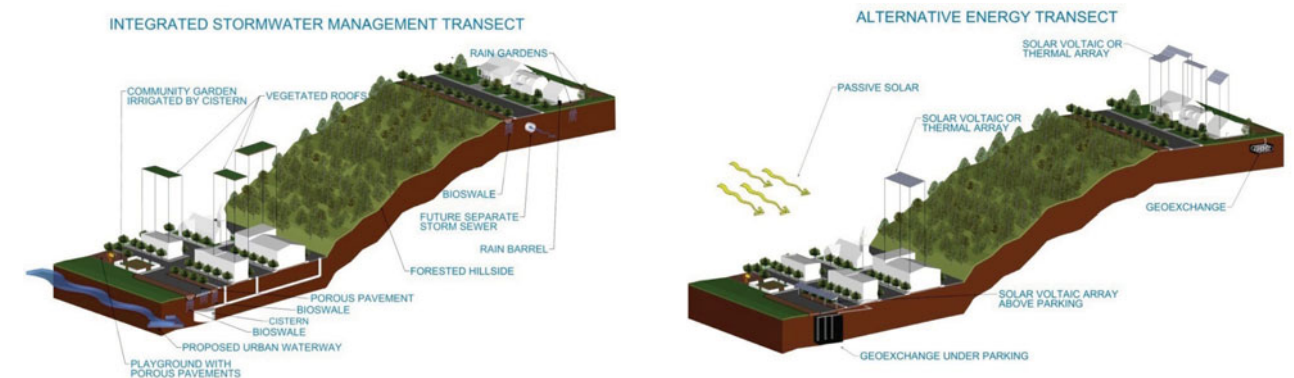
- Feedback from Community Design Workshop #1
- Project Groundwork community benefits
- HUD Livability Principles



## Watershed Transect



## Watershed Transect

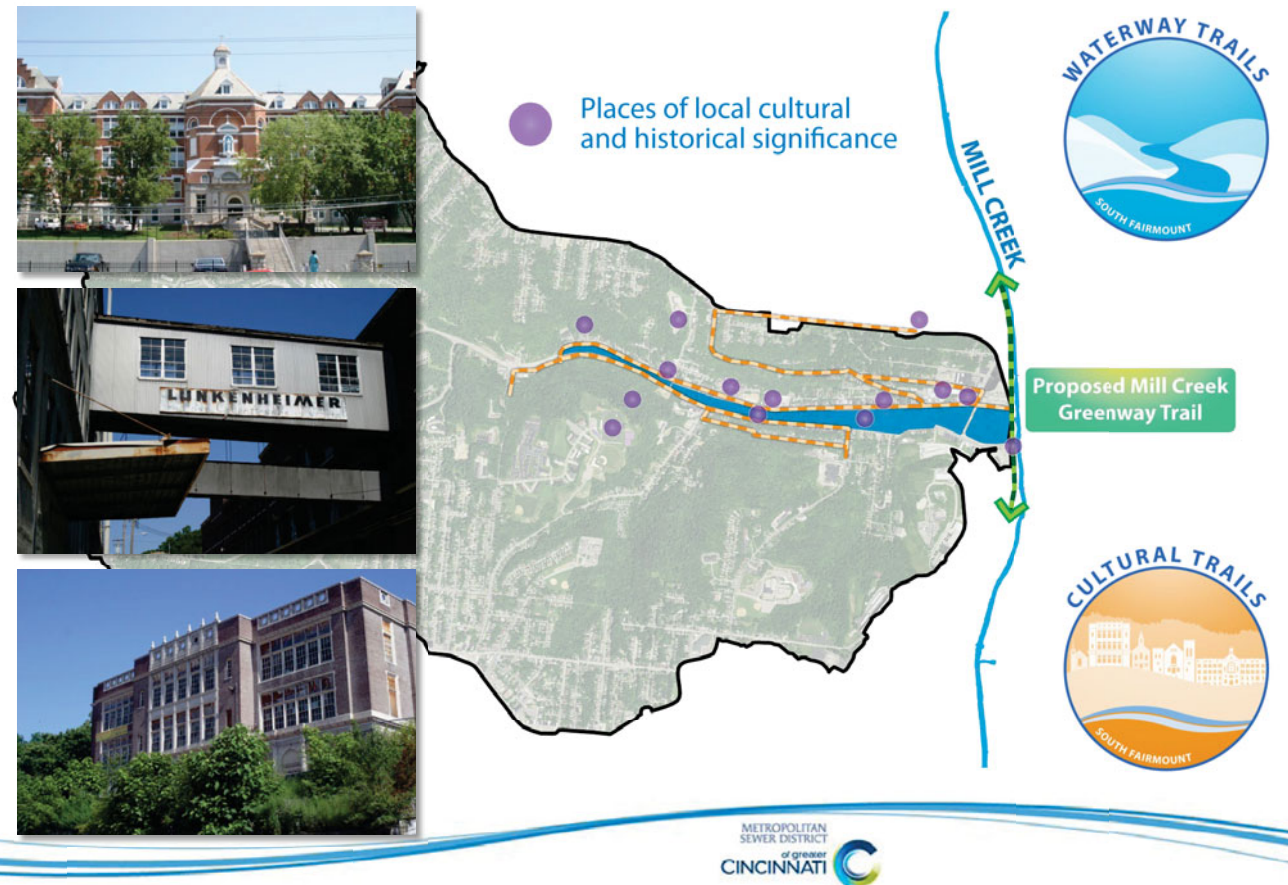


### Application of the watershed transect to sustainable systems

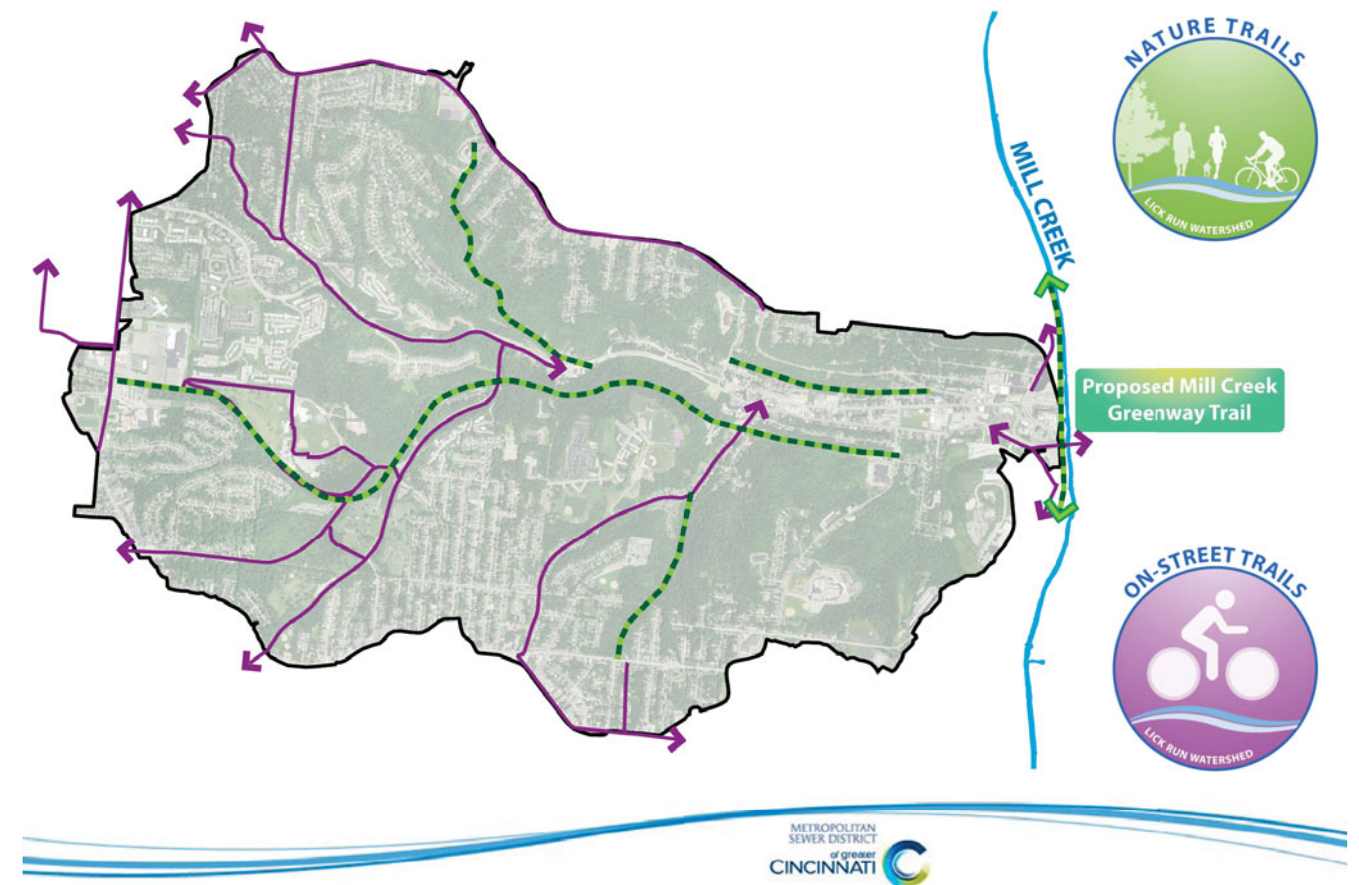
- Alternative energy
- Stormwater management features
- Land use
- Building codes



## Trail Network: Community Core



## Trail Network: Watershed Connectivity

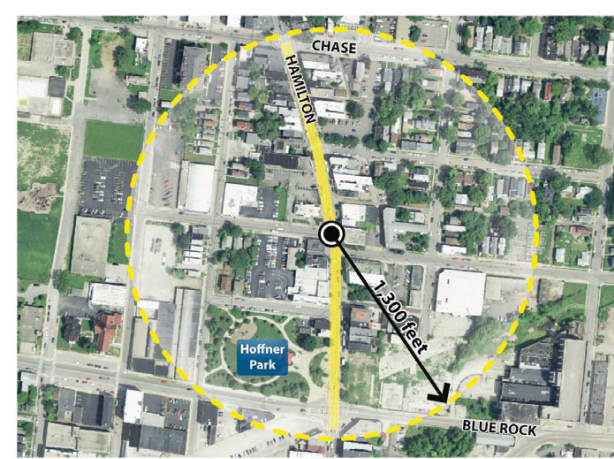


## Urban Design Analysis

**Scale:** Examples of local neighborhood business districts



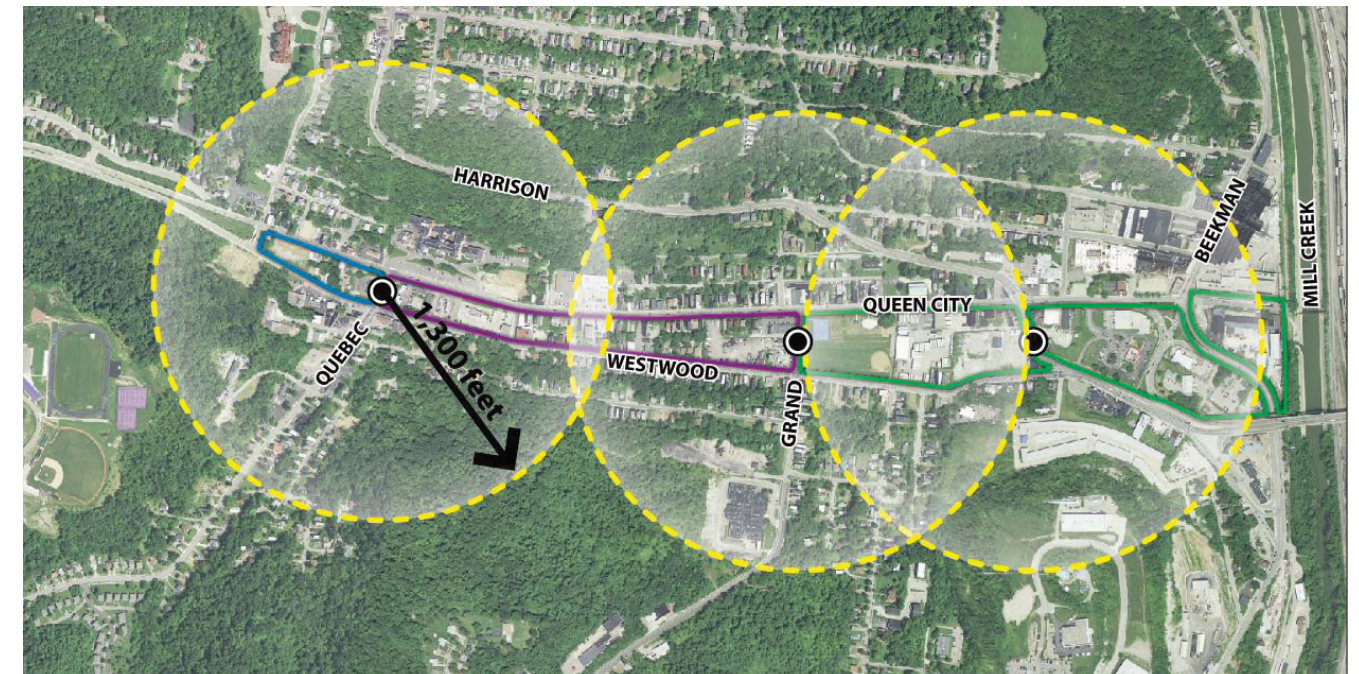
Ludlow Avenue (Clifton)



Hamilton Avenue (Northside)

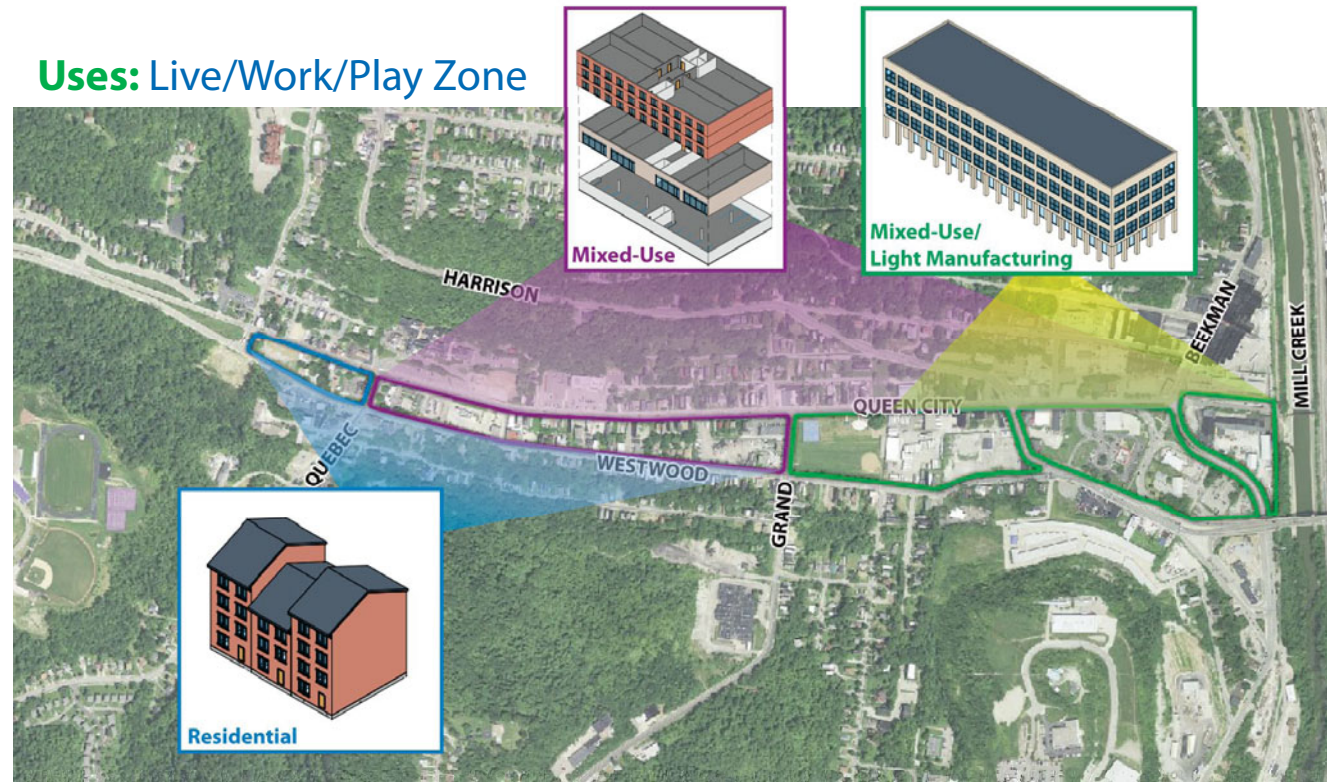
## Urban Design Analysis

**Walkability:** 1,300-foot radius



# Urban Design Analysis

Uses: Live/Work/Play Zone



# Transportation Network: Queen City Avenue



## Queen City Avenue

Existing Conditions

Average right-of-way:	<b>60 feet</b>
One-way Travel lanes:	<b>3 total</b>
Dedicated parking lane:	<b>1 total</b>
Traffic Volume:	<b>16,000</b> vehicles per day



# Transportation Network: Queen City Avenue

## Concept 1: Curb-to-Curb

- One-way traffic remains with 4 existing lanes (3 travel, 1 parking)
- Pedestrian safety improvements (sidewalks, crosswalks & lighting)

## Concept 2: Reduced Roadway Width

- One-way traffic remains with 3 wider lanes
- Pedestrian safety improvements (sidewalks, crosswalks & lighting)
- Stormwater planters

## Concept 3: Local Two-Way Street

- Two travel lanes and two permanent parking lanes
- Pedestrian safety improvements (sidewalks, crosswalks & lighting)
- Stormwater planters and bump-outs with street trees

# Concept 1: Curb-to-Curb

- One-way traffic remains with 4 existing lanes (3 travel, 1 parking)
- Pedestrian safety improvements (sidewalks, crosswalks & lighting)



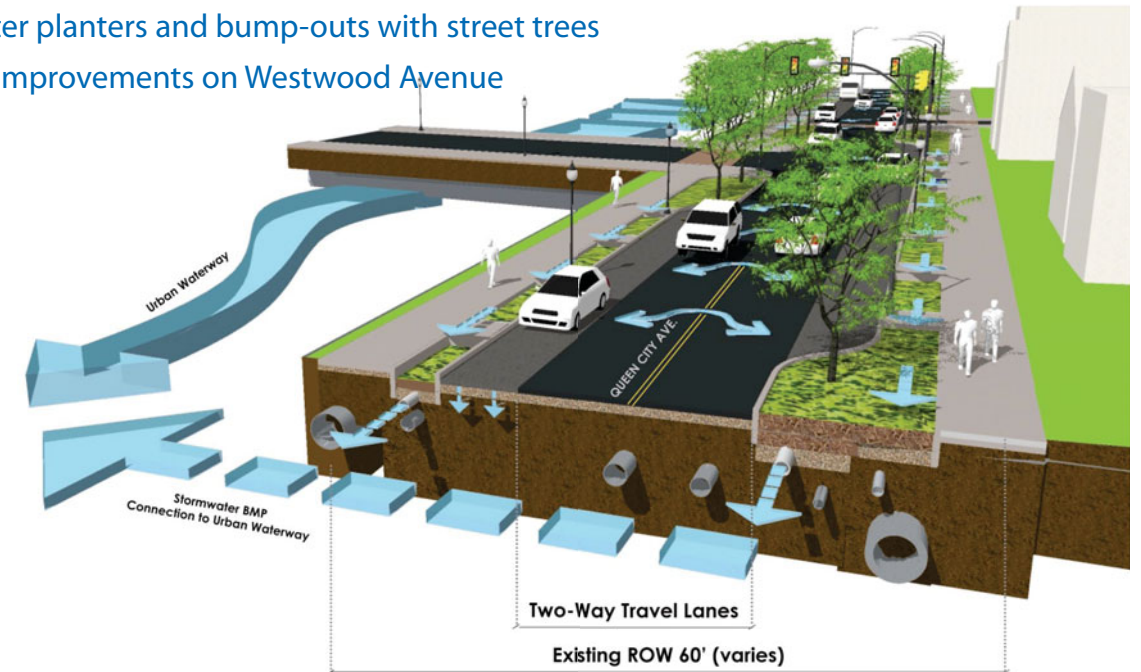
## Concept 2: Reduced Roadway Width

- One-way traffic remains with 3 wider lanes
- Pedestrian safety improvements (sidewalks, crosswalks & lighting)
- Stormwater planters

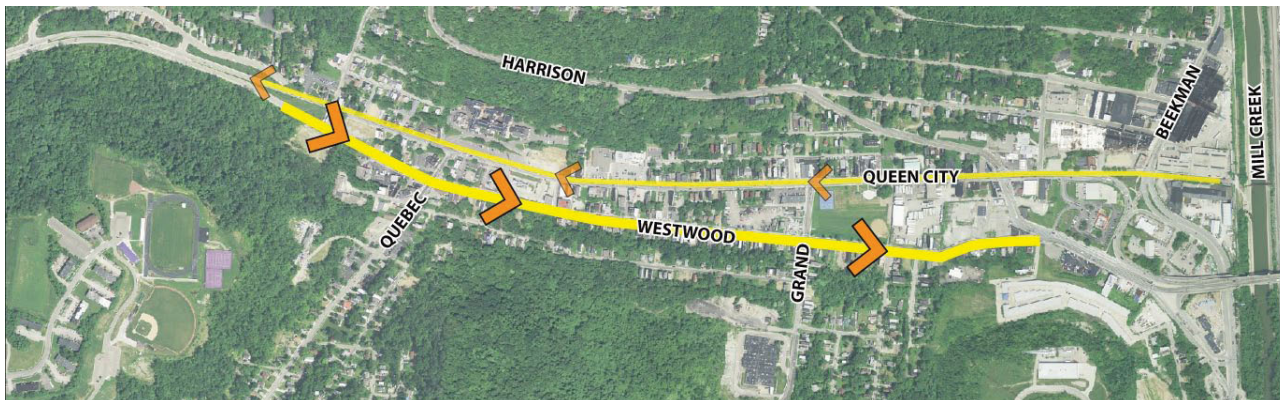


## Concept 3: Local Two-Way Street

- Two travel lanes and two permanent parking lanes
- Pedestrian safety improvements (sidewalks, crosswalks & lighting)
- Stormwater planters and bump-outs with street trees
- Requires improvements on Westwood Avenue



## Transportation Network: Westwood Avenue



### Westwood Avenue

Existing Conditions

Average right-of-way:	<b>58 feet</b>
One-way Travel lanes:	<b>3 total</b>
Dedicated parking lane:	<b>1 total</b>
Traffic Volume:	<b>23,000</b> vehicles per day



## Transportation Network: Westwood Avenue

### Concept 1: Curb-to-Curb

- One-way traffic remains with 4 existing lanes (3 travel, 1 parking)
- Pedestrian safety improvements (sidewalks, crosswalks & lighting)

### Concept 2: Reduced Roadway Width

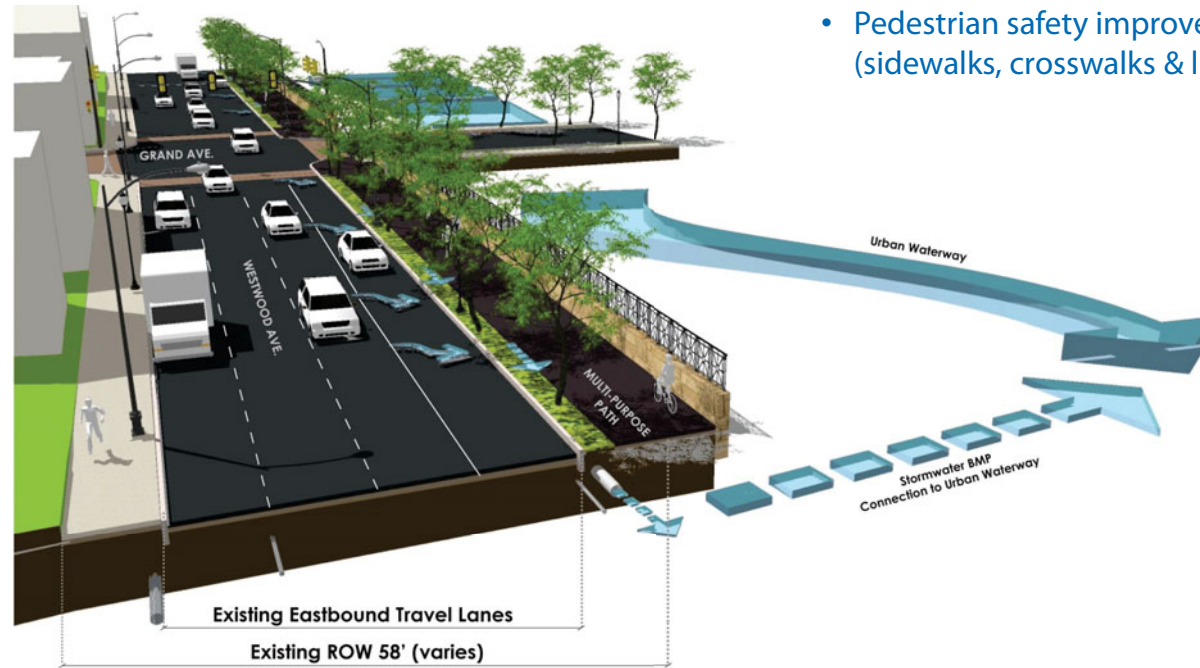
- One-way traffic remains with 3 wider lanes
- Pedestrian safety improvements (sidewalks, crosswalks & lighting)
- Stormwater planters

### Concept 3: Ecological Parkway

- Expands existing right-of-way (requires removal of buildings on south side of Westwood)
- 3 one-way lanes in each direction
- Pedestrian safety improvements (sidewalks, crosswalks & lighting)
- Stormwater planters and street trees

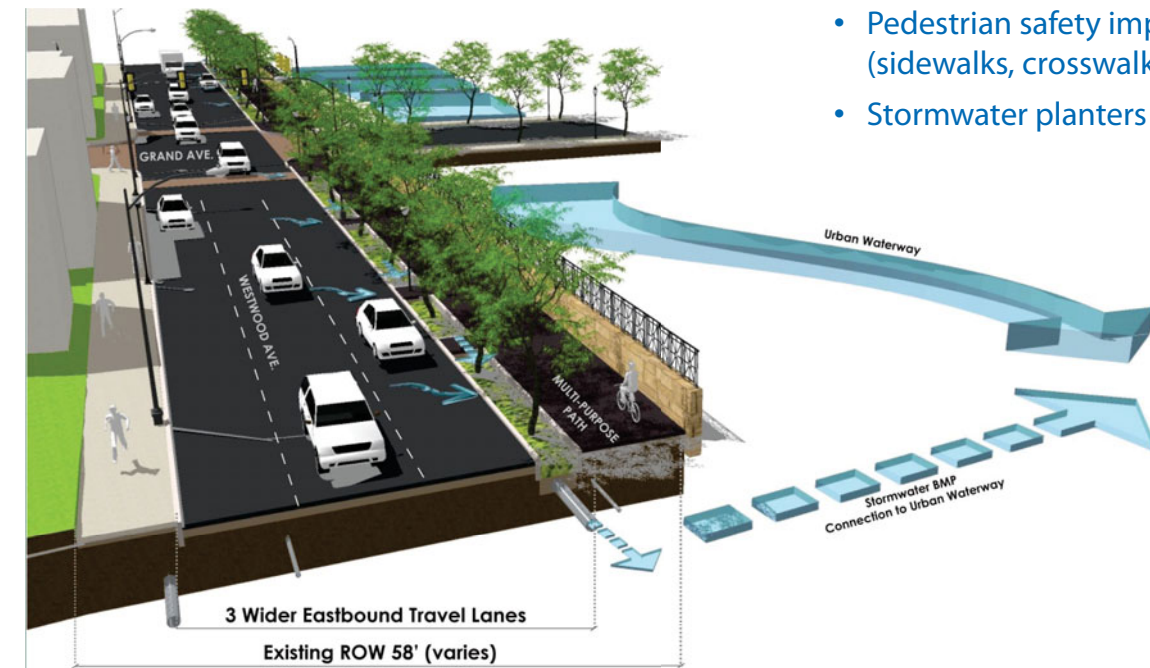
## Concept 1: Curb-to-Curb

- One-way traffic remains with 4 existing lanes (3 travel, 1 parking)
- Pedestrian safety improvements (sidewalks, crosswalks & lighting)



## Concept 2: Reduced Roadway Width

- One-way traffic remains with 3 wider lanes
- Pedestrian safety improvements (sidewalks, crosswalks & lighting)
- Stormwater planters



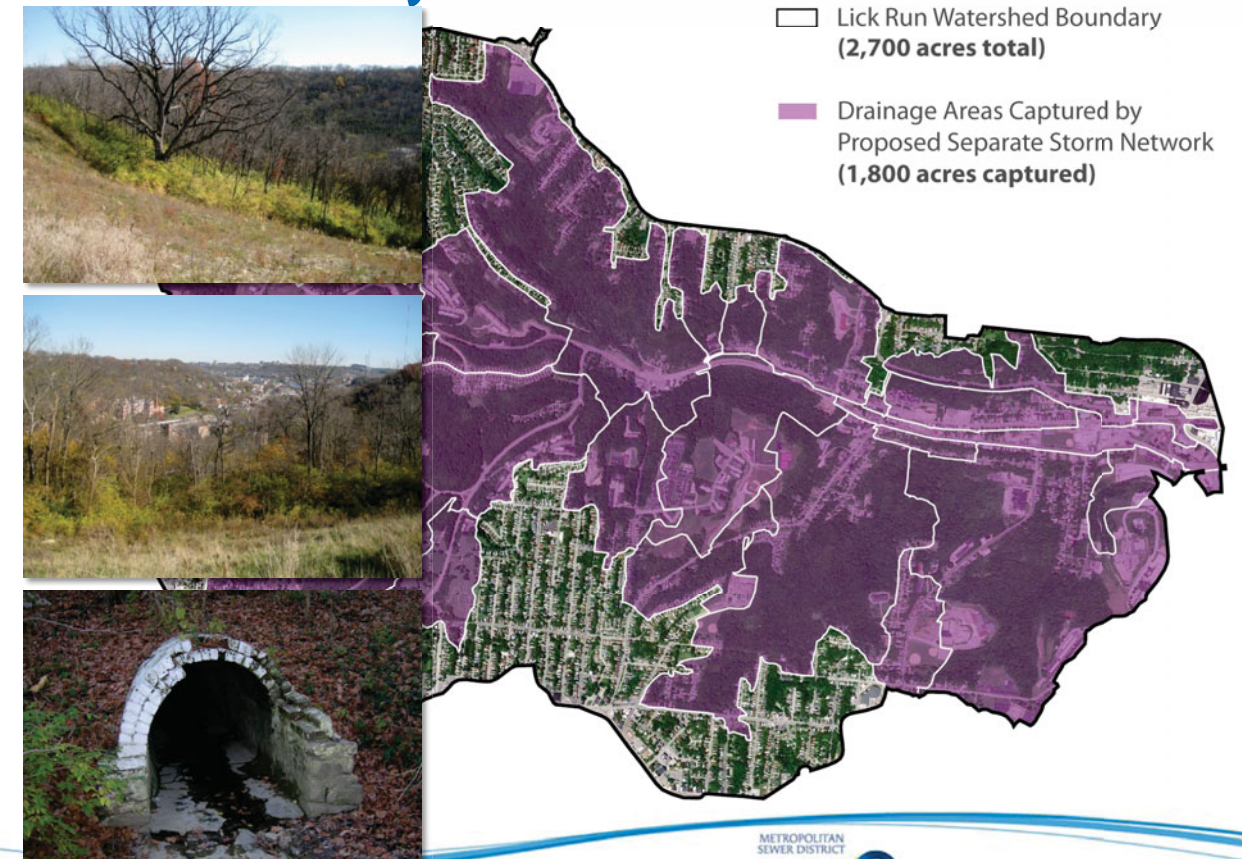
## Concept 3: Ecological Parkway

- Expands existing right-of-way (requires removal of buildings on south side of Westwood)
- 3 one-way lanes in each direction
- Pedestrian safety improvements (sidewalks, crosswalks & lighting)
- Stormwater planters and street trees



## Urban Waterway Corridor

- Lick Run Watershed Boundary (2,700 acres total)
- Drainage Areas Captured by Proposed Separate Storm Network (1,800 acres captured)



## Urban Waterway Corridor



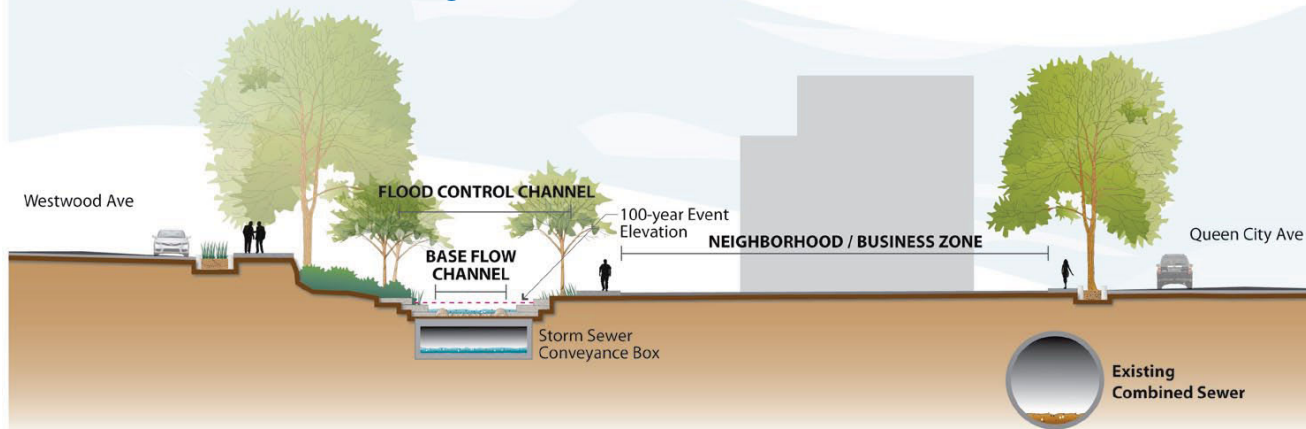
## Urban Waterway Corridor

### Goals

- Safely convey stormwater runoff to Mill Creek
- Maximize water quality improvement
- Maximize the potential for more green space, recreational uses, and community amenities
- Provide a potential catalyst for community reinvestment as part of MSD's Communities of the Future approach

## Urban Waterway Corridor

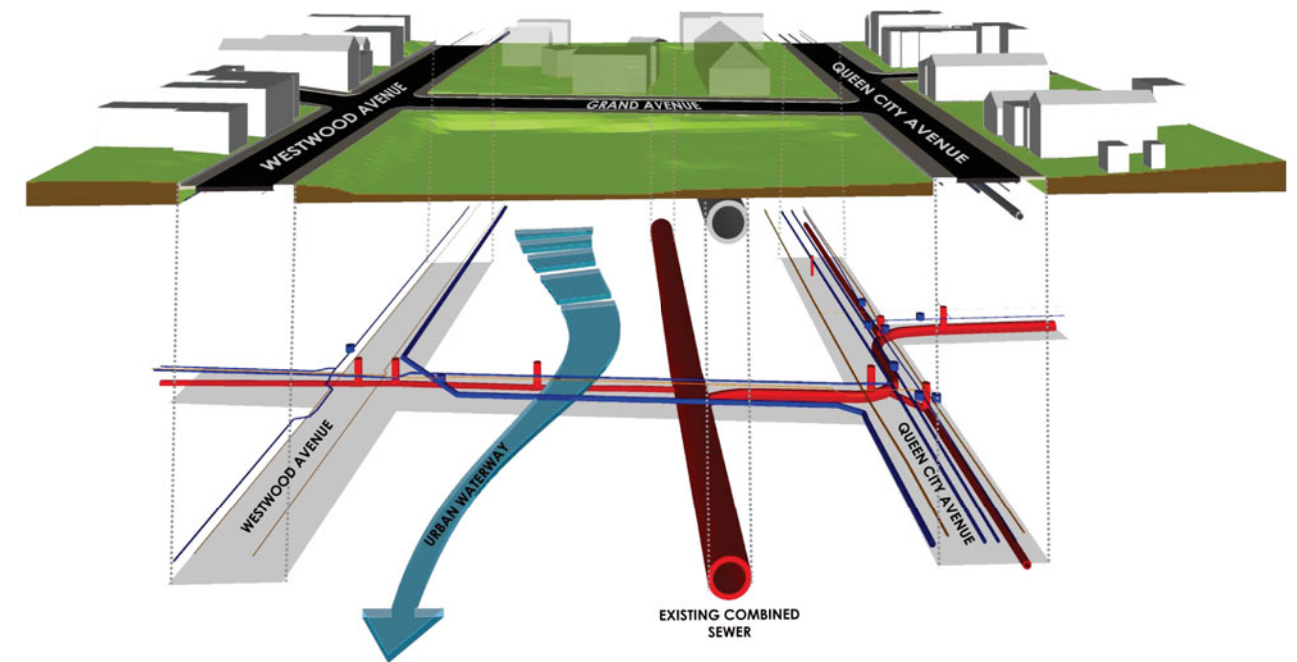
Near Quebec Avenue (looking west)



### Hybrid System

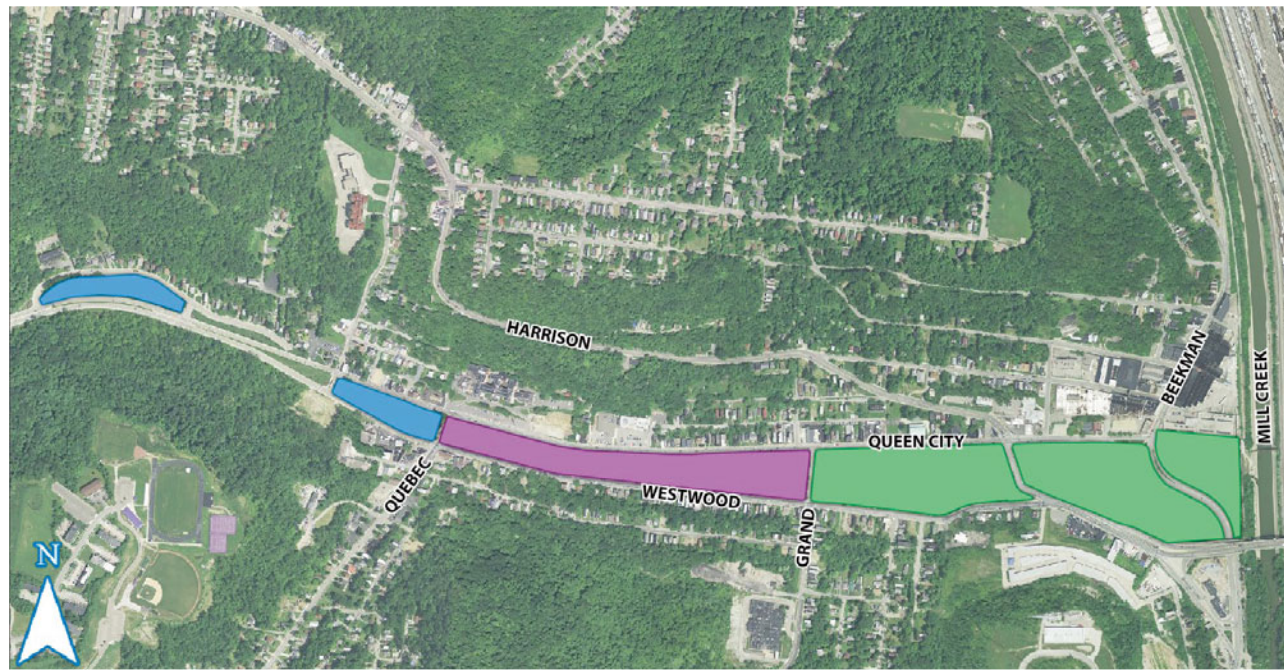
- Includes surface waterway and underground storm sewer conveyance box
- Emphasis on features for water quality benefits
- Minimizes risks to public safety (fast water goes in the conveyance box)
- Provides opportunities for community amenities

## Urban Waterway Corridor



### Existing Conditions

## Urban Waterway Corridor



- **Western Gateway Zone**  
1 Concept
- **Narrow Channel Zone**  
3 Concepts
- **Eastern Gateway Zone**  
3 Concepts

## Western Gateway Zone: Existing Conditions



### Design Constraints

- Existing combined sewer
- Existing roadways/traffic
- Existing underground utilities
- Existing buildings

## Western Gateway Zone Concept



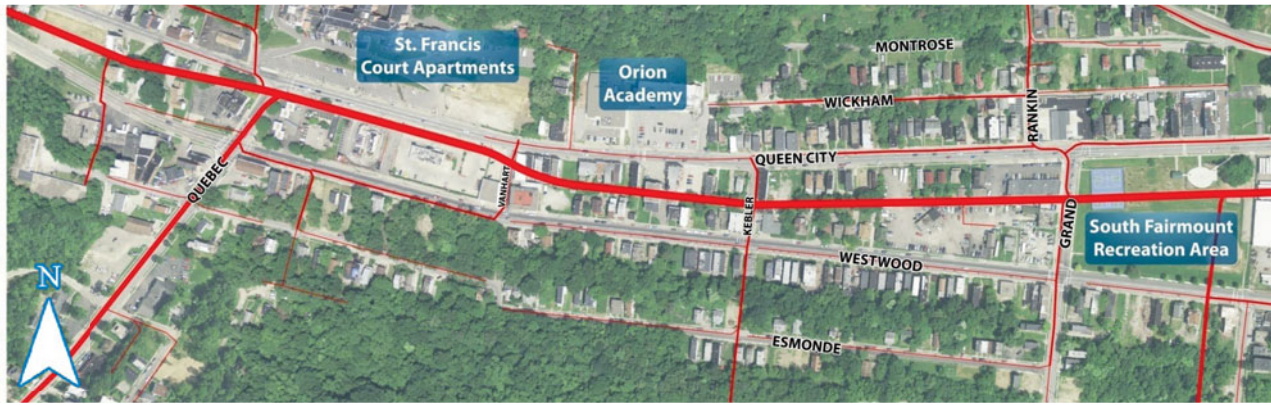
### Beginning the Urban Waterway

- Large wetland feature to improve water quality
- Outfall feature and smaller wetland near beginning of stream
- Potential for neighborhood gateway and educational signage
- Potential for neighborhood parking lot with trailhead access

## Western Gateway Zone Concept



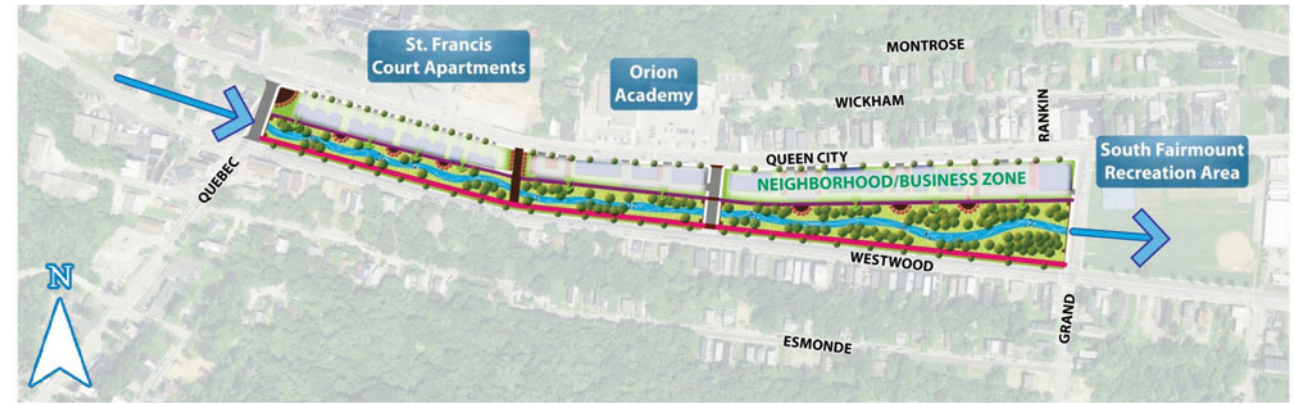
## Narrow Channel Zone: Existing Conditions



### Design Constraints

- Existing combined sewer
- Existing roadways/traffic
- Existing underground utilities
- Existing buildings

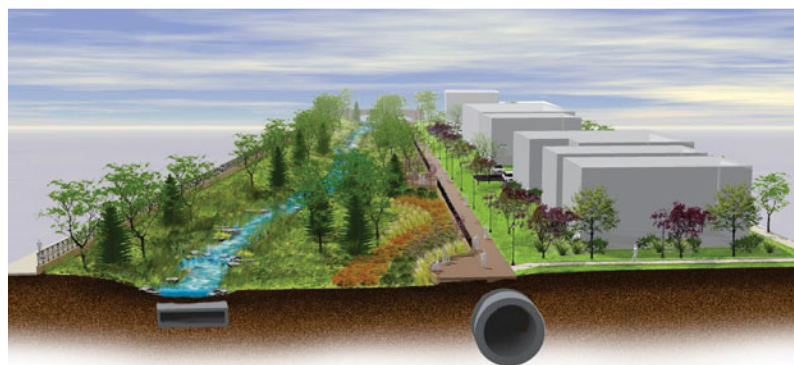
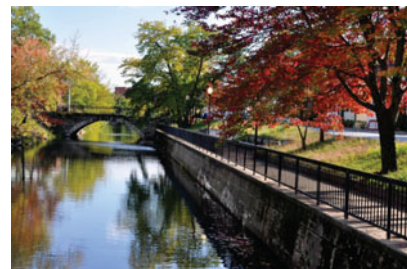
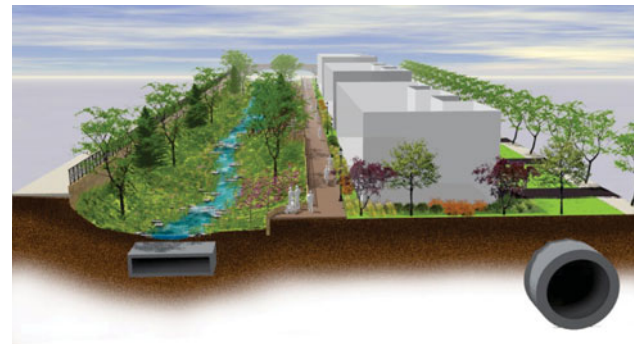
## Narrow Channel Zone: Concept 1



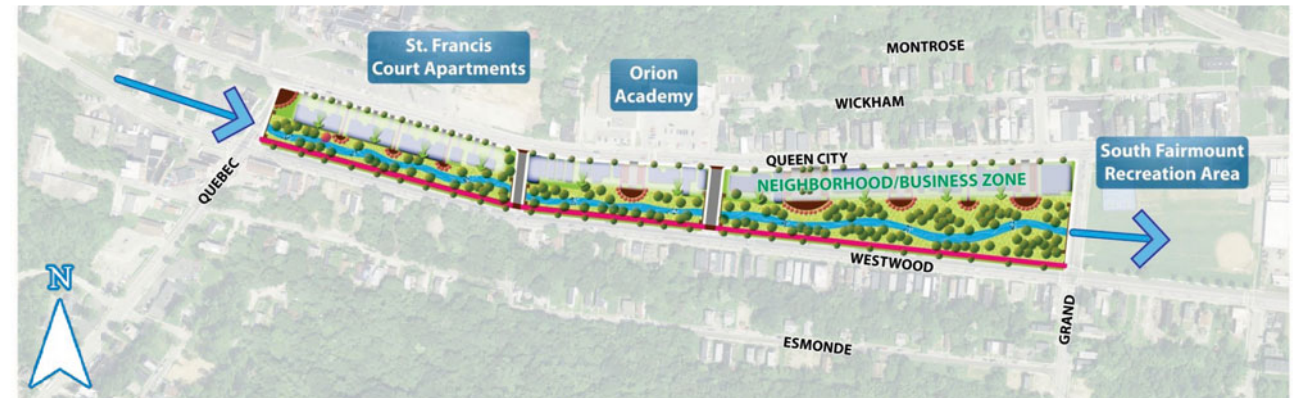
### Waterside Pedestrian Walkway

- Narrow waterway with retaining walls on both sides
- Pedestrian walkway, with overlooks and seating, on north side
- Multipurpose trail on south side
- Green infrastructure features integrated into surface parking lots
- In-stream features (e.g., pools, riffles) to improve water quality
- Opportunities for future residential/business development north of waterway

## Narrow Channel Zone: Concept 1



## Narrow Channel Zone: Concept 2

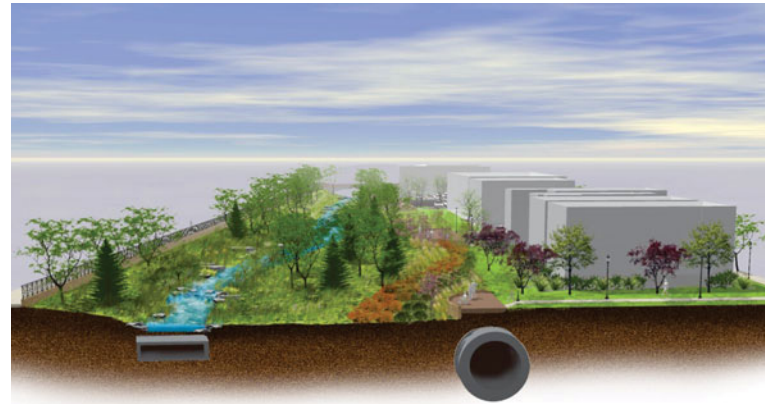
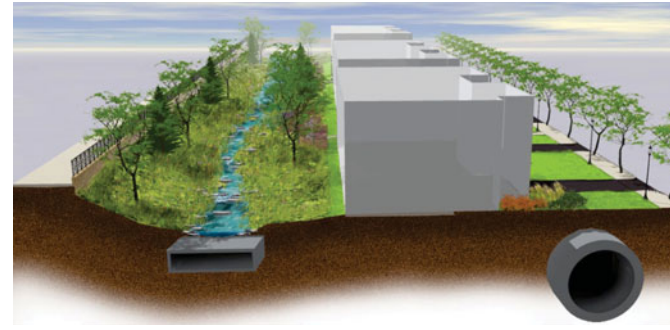


### Waterside Overlooks

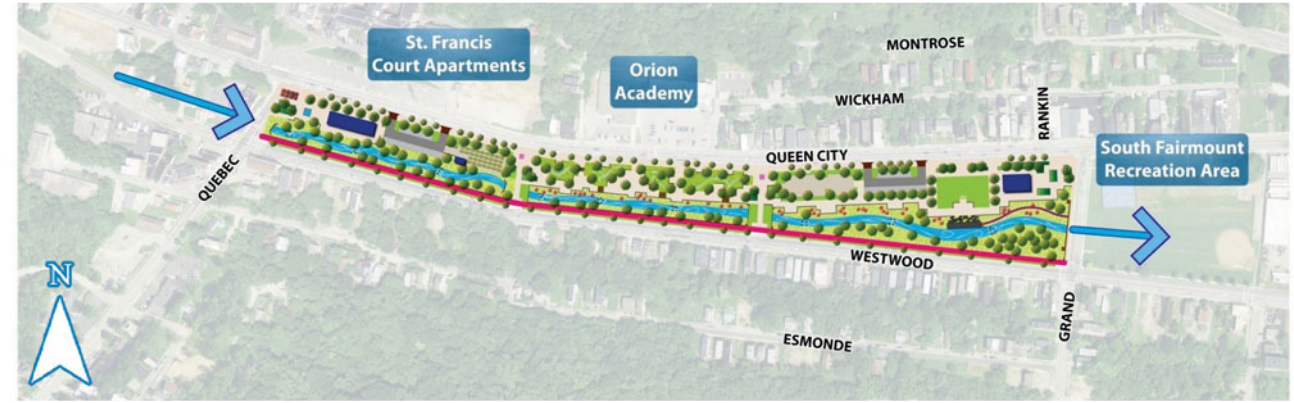
- Narrow waterway with retaining walls
- Overlooks to waterway located near surface parking lots/civic spaces
- Multipurpose trail on south side
- In-stream features (e.g., pools, riffles) to improve water quality
- Opportunities for future residential/business development north of waterway



## Narrow Channel Zone: Concept 2



## Narrow Channel Zone: Concept 3



### Community Park

- Narrow waterway with retaining walls, terraces, and water access points
- Emphasis on public amenities (e.g., farmers market, community gardens, educational gardens, dog park, civic lawn, shelters, etc.)
- Multipurpose trail on south side of channel
- In-stream features (e.g., pools, riffles) to improve water quality

## Narrow Channel Zone: Concept 3



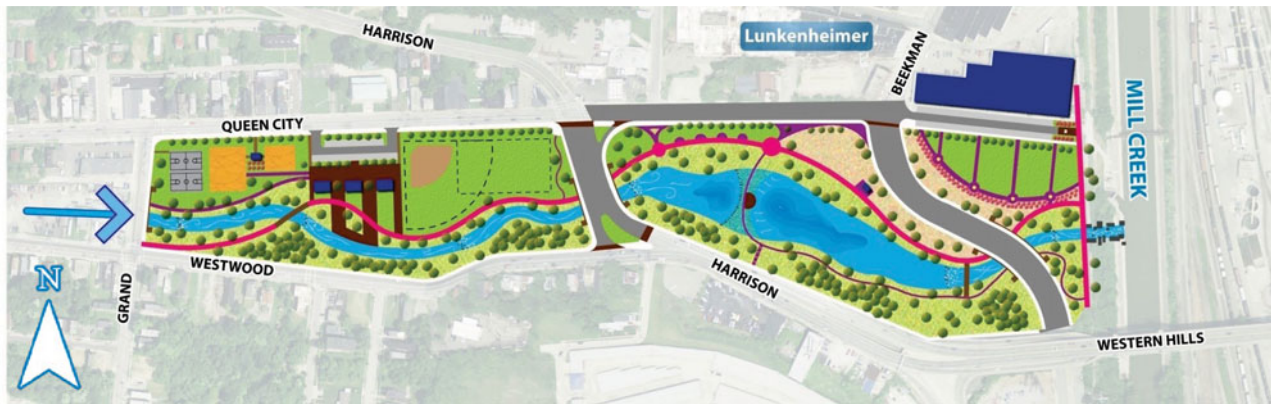
## Eastern Gateway Zone: Existing Conditions



### Design Constraints

- Existing combined sewer
- Existing roadways/traffic
- Existing underground utilities
- Existing buildings

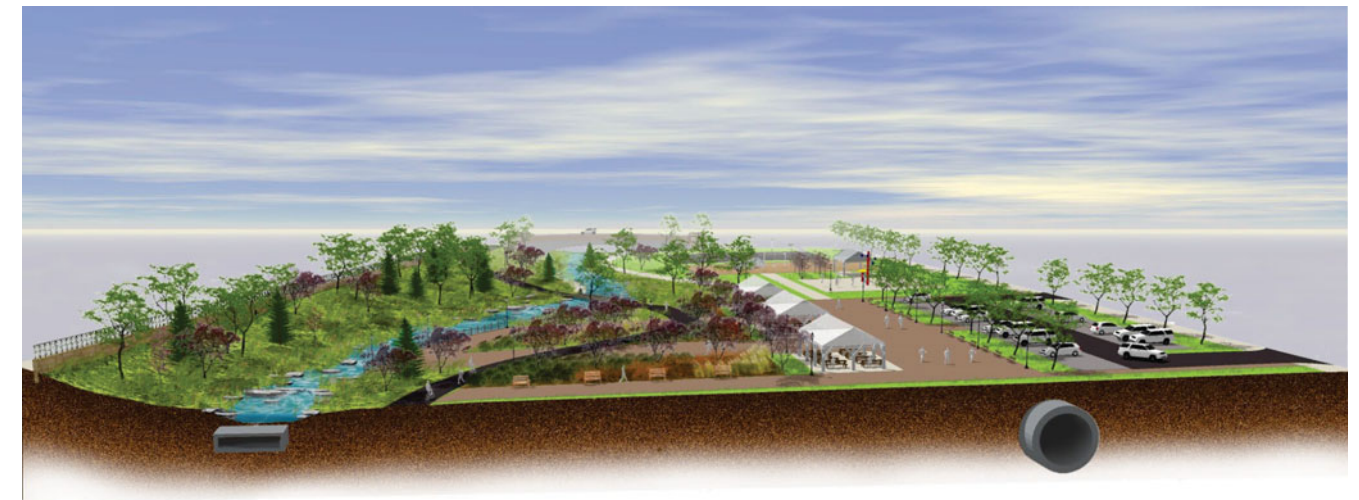
## Eastern Gateway Zone: Concept 1



### Community Recreation and Open Space

- Lake with shallow pool and a deeper second pool (for water quality)
- Mix of recreation facilities: active, passive, and civic open space
- Multipurpose trail on north side of channel
- In-stream features (e.g., pools, riffles) to improve water quality
- Gathering places and pedestrian walkways
- Large community open space for large events

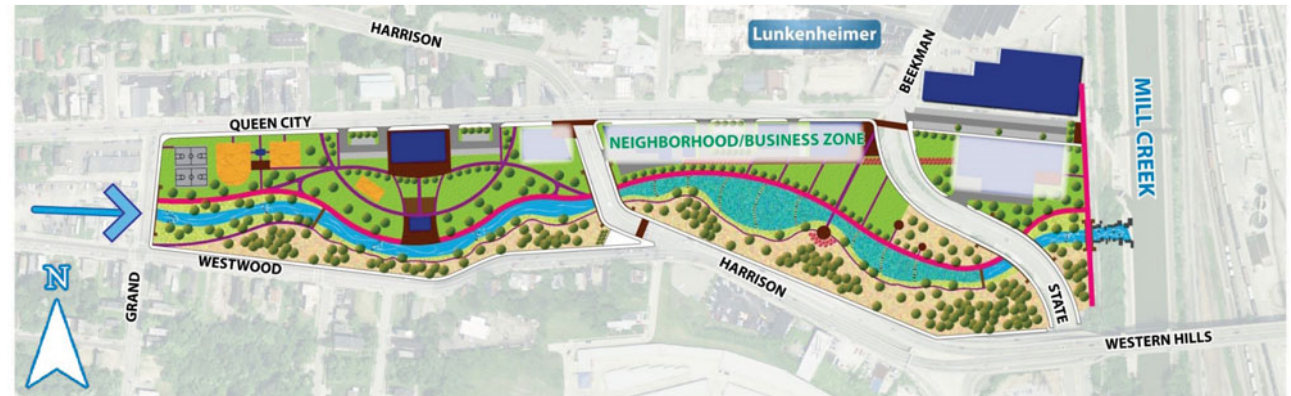
## Eastern Gateway Zone: Concept 1



## Eastern Gateway Zone: Concept 1



## Eastern Gateway Zone: Concept 2



### Community Hub and Wetland

- Variable waterway width with large wetland (for water quality)
- Enhanced recreation hub with pavilion, amphitheater, and amenities
- Multipurpose trail creates hard edge for north side of waterway
- Opportunities for future business development north of waterway
- In-stream features (e.g., pools, riffles) to improve water quality
- Potential for other neighborhood businesses/services

## Eastern Gateway Zone: Concept 2



## Eastern Gateway Zone: Concept 2



## Eastern Gateway Zone: Concept 3



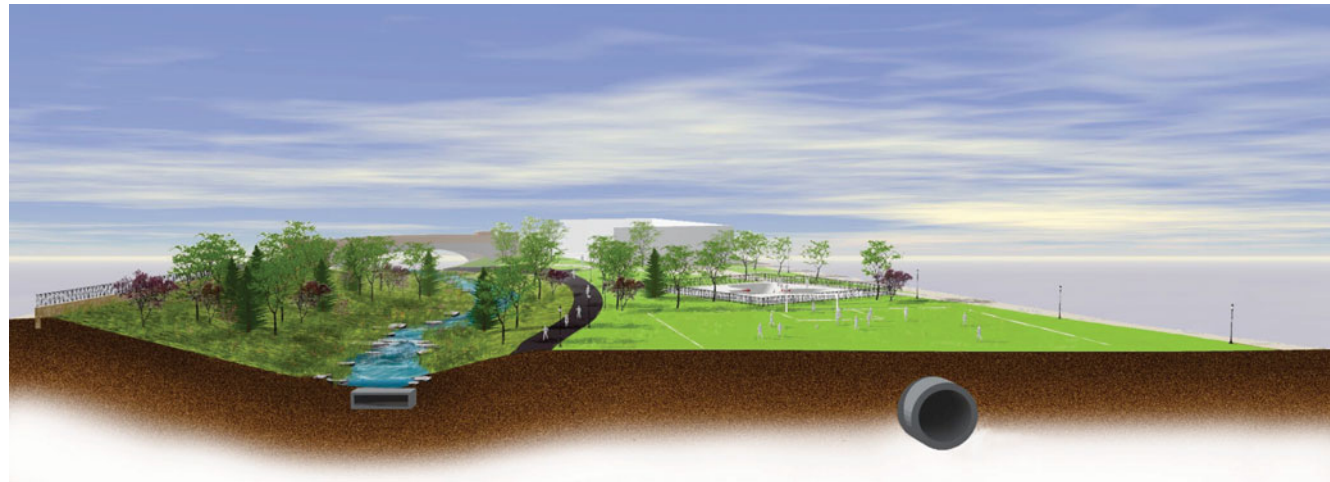
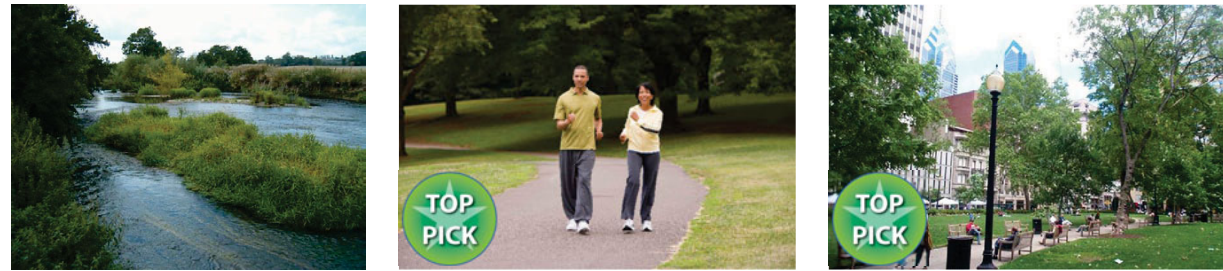
### Small Lake & Braided Wetlands

- Waterway widens to create small lake and braided wetlands
- Multipurpose trail on north side of channel crosses State Avenue with bridge
- Meadows surrounding natural-looking waterway
- Large multipurpose lawn for civic events and recreation
- In-stream features (e.g., pools, riffles) to improve water quality
- Opportunities for future business development north of waterway

## Eastern Gateway Zone: Concept 3



## Eastern Gateway Zone: Concept 3



## Strengths & Weaknesses Evaluation

**WESTERN GATEWAY ZONE** Beginning the Urban Waterway

Concept Description	Strength	Weakness	Community Goals (preferences from Community Design Workshop #1)	Strength	Weakness
Large wetland feature to improve water quality	<input type="radio"/>	<input type="radio"/>	Waterway with natural stone and vegetation	<input type="radio"/>	<input type="radio"/>
Outfall feature and smaller wetland near beginning of waterway	<input type="radio"/>	<input type="radio"/>	Multipurpose trail along northern edge of Westwood Avenue	<input type="radio"/>	<input type="radio"/>
Potential for neighborhood gateway and educational signage	<input type="radio"/>	<input type="radio"/>	Gathering places and pedestrian walkways	<input type="radio"/>	<input type="radio"/>
Potential for neighborhood parking lot with trailhead access	<input type="radio"/>	<input type="radio"/>	Off-street surface parking lots	<input type="radio"/>	<input type="radio"/>
			Green infrastructure features integrated into surface parking lots	<input type="radio"/>	<input type="radio"/>
			Gateway celebrates neighborhood character and history	<input type="radio"/>	<input type="radio"/>

1. Are there other **strengths** of the concept? (please specify)

2. Are there other **weaknesses** of the concept? (please specify)

METROPOLITAN SEWER DISTRICT of greater CINCINNATI LICK RUN WATERSHED Strengths & Weaknesses Evaluation

## Strengths & Weaknesses Evaluation

**WESTERN GATEWAY ZONE** Beginning the Urban Waterway

METROPOLITAN SEWER DISTRICT of greater CINCINNATI LICK RUN WATERSHED Strengths & Weaknesses Evaluation

## Community Design Workshop #2

### Group Discussions

Evaluate strengths & weaknesses of design concepts for the proposed urban waterway (60 minutes)

Evaluate long-term watershed-wide opportunities (30 minutes)

### Community Design Workshop #3

Use feedback to synthesize strengths into preliminary Lick Run Master Plan (Winter 2012)



## WESTERN GATEWAY ZONE Beginning the Urban Waterway



## WESTERN GATEWAY ZONE Beginning the Urban Waterway

### Concept Description

	Strength	Weakness	Community Goals (preferences from Community Design Workshop #1)	Strength	Weakness
Large wetland feature to improve water quality	<input type="radio"/>	<input type="radio"/>	Waterway with natural stone and vegetation	<input type="radio"/>	<input type="radio"/>
Outfall feature and smaller wetland near beginning of waterway	<input type="radio"/>	<input type="radio"/>	Multipurpose trail	<input type="radio"/>	<input type="radio"/>
Potential for neighborhood gateway and educational signage	<input type="radio"/>	<input type="radio"/>	Gathering places and pedestrian walkways	<input type="radio"/>	<input type="radio"/>
Potential for neighborhood parking lot with trailhead access	<input type="radio"/>	<input type="radio"/>	Off-street surface parking lots	<input type="radio"/>	<input type="radio"/>
			Green infrastructure features integrated into surface parking lots	<input type="radio"/>	<input type="radio"/>
			Gateway celebrates neighborhood character and history	<input type="radio"/>	<input type="radio"/>

1. Are there other **strengths** of the concept? (please specify)

---

---

---

---

---

---

---

---

---

---

2. Are there other **weaknesses** of the concept? (please specify)

---

---

---

---

---

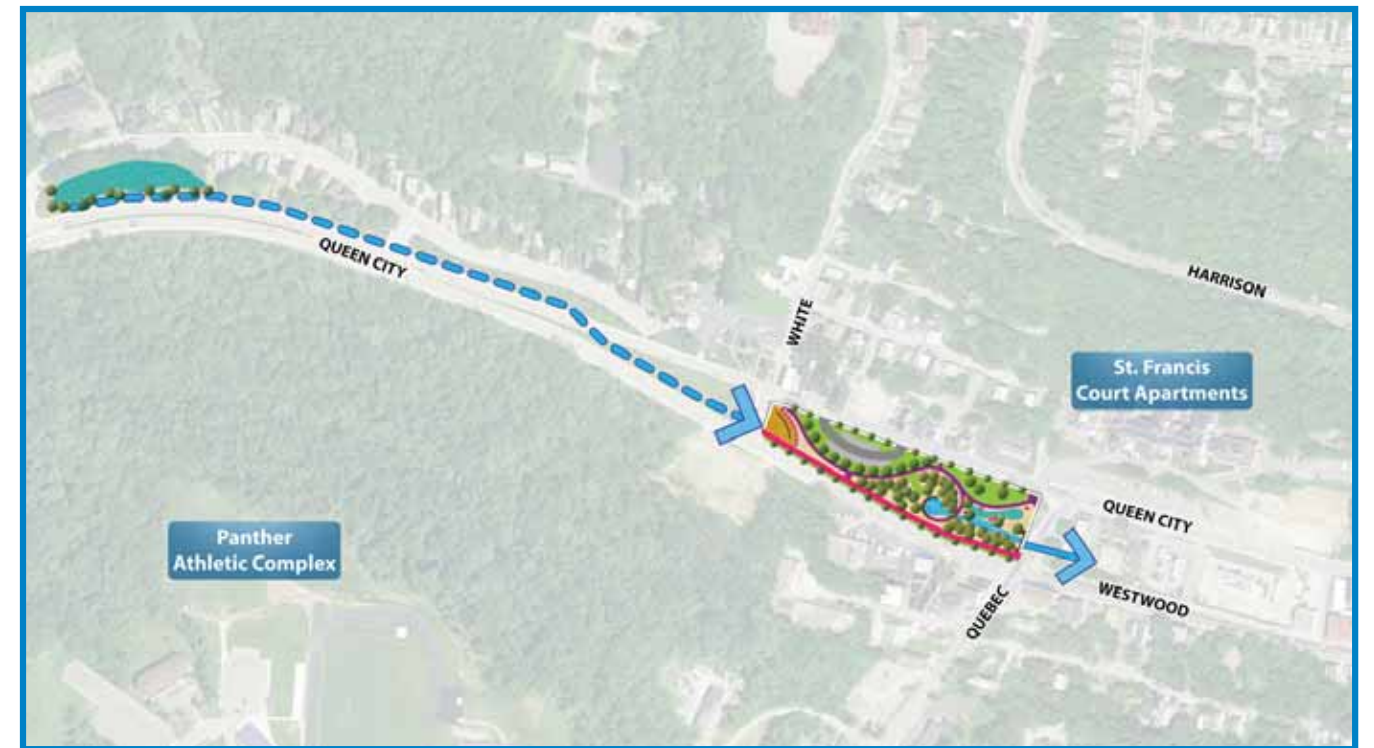
---

---

---

---

---





## NARROW CHANNEL ZONE Concept 1: Waterside Pedestrian Walkway



## NARROW CHANNEL ZONE Concept 1: Waterside Pedestrian Walkway

Concept Description	Strength	Weakness	Community Goals (preferences from Community Design Workshop #1)	Strength	Weakness
Narrow waterway with retaining walls on both sides	<input type="radio"/>	<input type="radio"/>	Waterway with natural stone and vegetation	<input type="radio"/>	<input type="radio"/>
Pedestrian walkway, with overlooks and seating, on north side	<input type="radio"/>	<input type="radio"/>	Multipurpose trail	<input type="radio"/>	<input type="radio"/>
Multipurpose trail on south side	<input type="radio"/>	<input type="radio"/>	Gathering places and pedestrian walkways	<input type="radio"/>	<input type="radio"/>
Green infrastructure features integrated into surface parking lots	<input type="radio"/>	<input type="radio"/>	Off-street surface parking lots	<input type="radio"/>	<input type="radio"/>
In-stream features (e.g., pools, riffles) to improve water quality	<input type="radio"/>	<input type="radio"/>	Green infrastructure features integrated into surface parking lots	<input type="radio"/>	<input type="radio"/>
Opportunities for residential/business development	<input type="radio"/>	<input type="radio"/>			

1. Are there other **strengths** of the concept? (please specify)

---

---

---

---

---

---

---

---

---

---

2. Are there other **weaknesses** of the concept? (please specify)

---

---

---

---

---

---

---

---

---

---





## NARROW CHANNEL ZONE Concept 2: Waterside Overlooks



## NARROW CHANNEL ZONE Concept 2: Waterside Overlooks

Concept Description	Strength	Weakness	Community Goals (preferences from Community Design Workshop #1)	Strength	Weakness
Narrow waterway with retaining walls on both sides	<input type="radio"/>	<input type="radio"/>	Waterway with natural stone and vegetation	<input type="radio"/>	<input type="radio"/>
Overlooks to waterway located near surface parking lots/civic spaces	<input type="radio"/>	<input type="radio"/>	Multipurpose trail	<input type="radio"/>	<input type="radio"/>
Multipurpose trail <u>only</u> on south side	<input type="radio"/>	<input type="radio"/>	Gathering places and pedestrian walkways	<input type="radio"/>	<input type="radio"/>
In-stream features (e.g., pools, riffles) to improve water quality	<input type="radio"/>	<input type="radio"/>	Off-street surface parking lots	<input type="radio"/>	<input type="radio"/>
Opportunities for residential/business development	<input type="radio"/>	<input type="radio"/>	Green infrastructure features integrated into surface parking lots	<input type="radio"/>	<input type="radio"/>

1. Are there other **strengths** of the concept? (please specify)

---

---

---

---

---

---

---

---

---

---

2. Are there other **weaknesses** of the concept? (please specify)

---

---

---

---

---

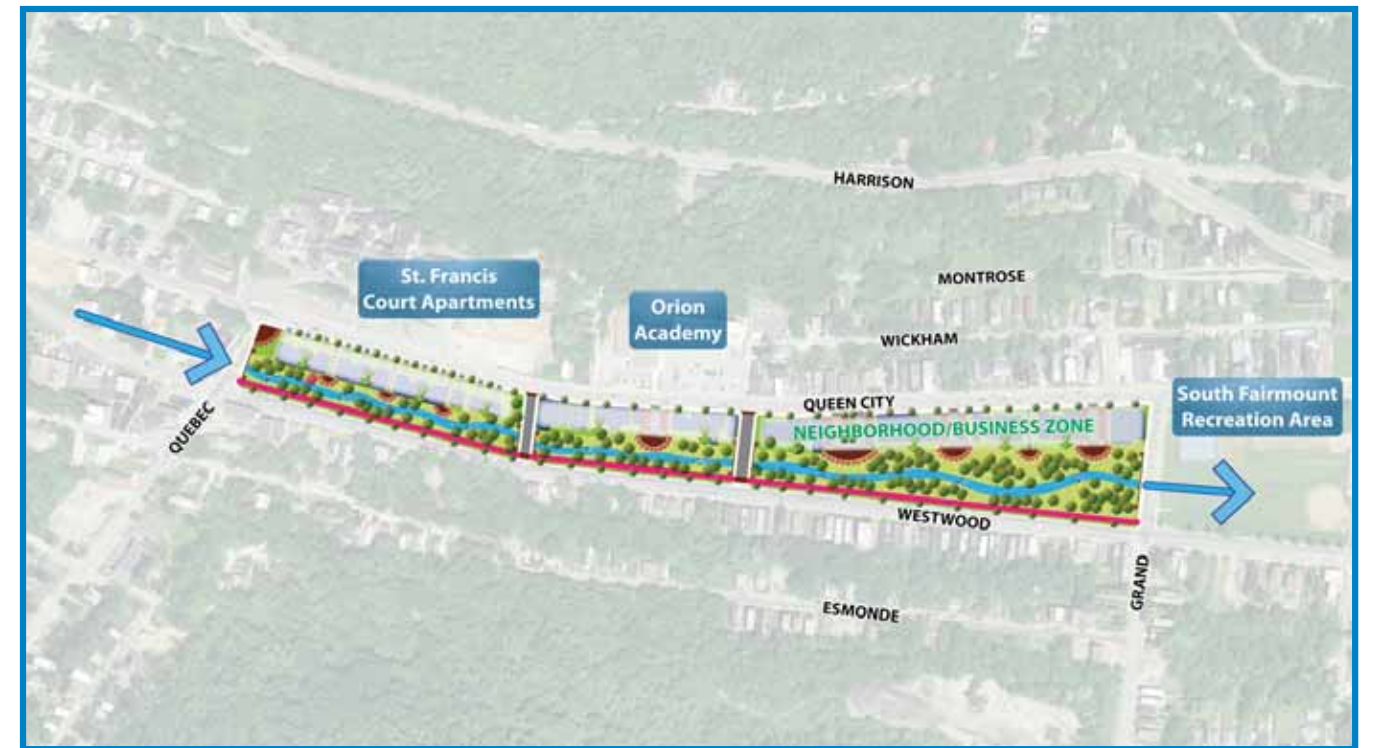
---

---

---

---

---





## NARROW CHANNEL ZONE Concept 3: Community Park



## NARROW CHANNEL ZONE Concept 3: Community Park

Concept Description	Strength	Weakness	Community Goals (preferences from Community Design Workshop #1)	Strength	Weakness
Narrow waterway with retaining walls, terraces, water overlooks	<input type="radio"/>	<input type="radio"/>	Waterway with natural stone and vegetation	<input type="radio"/>	<input type="radio"/>
Emphasis on public amenities			Multipurpose trail	<input type="radio"/>	<input type="radio"/>
Examples: farmers market, community gardens, educational gardens, dog park, civic lawn, shelters, etc.	<input type="radio"/>	<input type="radio"/>	Gathering places and pedestrian walkways	<input type="radio"/>	<input type="radio"/>
Multipurpose trail on south side of channel	<input type="radio"/>	<input type="radio"/>	Integration of open space areas	<input type="radio"/>	<input type="radio"/>
In-stream features (e.g., pools, riffles) to improve water quality	<input type="radio"/>	<input type="radio"/>	Off-street surface parking lots	<input type="radio"/>	<input type="radio"/>
			Green infrastructure features integrated into surface parking lots	<input type="radio"/>	<input type="radio"/>

1. Are there other **strengths** of the concept? (please specify)

---

---

---

---

---

---

---

---

---

---

2. Are there other **weaknesses** of the concept? (please specify)

---

---

---

---

---

---

---

---

---

---







**EASTERN GATEWAY ZONE Concept 1: Community Recreation and Open Space**



**EASTERN GATEWAY ZONE Concept 1: Community Recreation and Open Space**

Concept Description	Strength	Weakness	Community Goals (preferences from Community Design Workshop #1)	Strength	Weakness
Lake with shallow pool and a deeper second pool (for water quality)	<input type="radio"/>	<input type="radio"/>	Waterway with natural stone and vegetation	<input type="radio"/>	<input type="radio"/>
Mix of recreation facilities (active, passive, and civic open space)	<input type="radio"/>	<input type="radio"/>	Multipurpose trail	<input type="radio"/>	<input type="radio"/>
Multipurpose trail on north side of channel	<input type="radio"/>	<input type="radio"/>	Gathering places and pedestrian walkways	<input type="radio"/>	<input type="radio"/>
In-stream features (e.g., pools, riffles) to improve water quality	<input type="radio"/>	<input type="radio"/>	Relocated and enlarged baseball/soccer fields	<input type="radio"/>	<input type="radio"/>
Gathering places and pedestrian walkways	<input type="radio"/>	<input type="radio"/>	Large community open space for large events	<input type="radio"/>	<input type="radio"/>
Large community open space for large events	<input type="radio"/>	<input type="radio"/>			

1. Are there other **strengths** of the concept? (please specify)

---

---

---

---

---

---

---

---

---

---

2. Are there other **weaknesses** of the concept? (please specify)

---

---

---

---

---

---

---

---

---

---





**EASTERN GATEWAY ZONE**    **Concept 2: Community Hub and Wetland**



**EASTERN GATEWAY ZONE**    **Concept 2: Community Hub and Wetland**

Concept Description	Strength	Weakness	Community Goals (preferences from Community Design Workshop #1)	Strength	Weakness
Variable waterway width with large wetland (for water quality)	<input type="radio"/>	<input type="radio"/>	Waterway with natural stone and vegetation	<input type="radio"/>	<input type="radio"/>
Enhanced recreation hub with pavilion, amphitheater, and amenities	<input type="radio"/>	<input type="radio"/>	Multipurpose trail	<input type="radio"/>	<input type="radio"/>
Multipurpose trail creates hard edge for north side of waterway	<input type="radio"/>	<input type="radio"/>	Waterway with a natural edge (south) and a hard edge (north)	<input type="radio"/>	<input type="radio"/>
Opportunities for future business development north of waterway	<input type="radio"/>	<input type="radio"/>	Gathering places and pedestrian walkways	<input type="radio"/>	<input type="radio"/>
In-stream features (e.g., pools, riffles) to improve water quality	<input type="radio"/>	<input type="radio"/>	Off-street surface parking lots	<input type="radio"/>	<input type="radio"/>
Potential for other neighborhood businesses/services	<input type="radio"/>	<input type="radio"/>	Defined/enhanced central core for neighborhood	<input type="radio"/>	<input type="radio"/>

1. Are there other **strengths** of the concept? (please specify)

---

---

---

---

---

---

---

---

---

---

2. Are there other **weaknesses** of the concept? (please specify)

---

---

---

---

---

---

---

---

---

---





## EASTERN GATEWAY ZONE Concept 3: Small Lake & Braided Wetlands



## EASTERN GATEWAY ZONE Concept 3: Small Lake & Braided Wetlands

Concept Description	Strength	Weakness	Community Goals (preferences from Community Design Workshop #1)	Strength	Weakness
Waterway widens to create small lake and braided wetlands	<input type="radio"/>	<input type="radio"/>	Waterway with natural stone and vegetation	<input type="radio"/>	<input type="radio"/>
Multipurpose trail on north side of channel (crosses State Avenue with bridge)	<input type="radio"/>	<input type="radio"/>	Multipurpose trail	<input type="radio"/>	<input type="radio"/>
Meadows surrounding natural-looking waterway	<input type="radio"/>	<input type="radio"/>	Gathering places and pedestrian walkways	<input type="radio"/>	<input type="radio"/>
Large multipurpose lawn for civic events and recreation	<input type="radio"/>	<input type="radio"/>	Off-street surface parking lots	<input type="radio"/>	<input type="radio"/>
In-stream features (e.g., pools, riffles) to improve water quality	<input type="radio"/>	<input type="radio"/>			
Opportunities for future business development north of waterway	<input type="radio"/>	<input type="radio"/>			

1. Are there other **strengths** of the concept? (please specify)

---

---

---

---

---

---

---

---

---

---

2. Are there other **weaknesses** of the concept? (please specify)

---

---

---

---

---

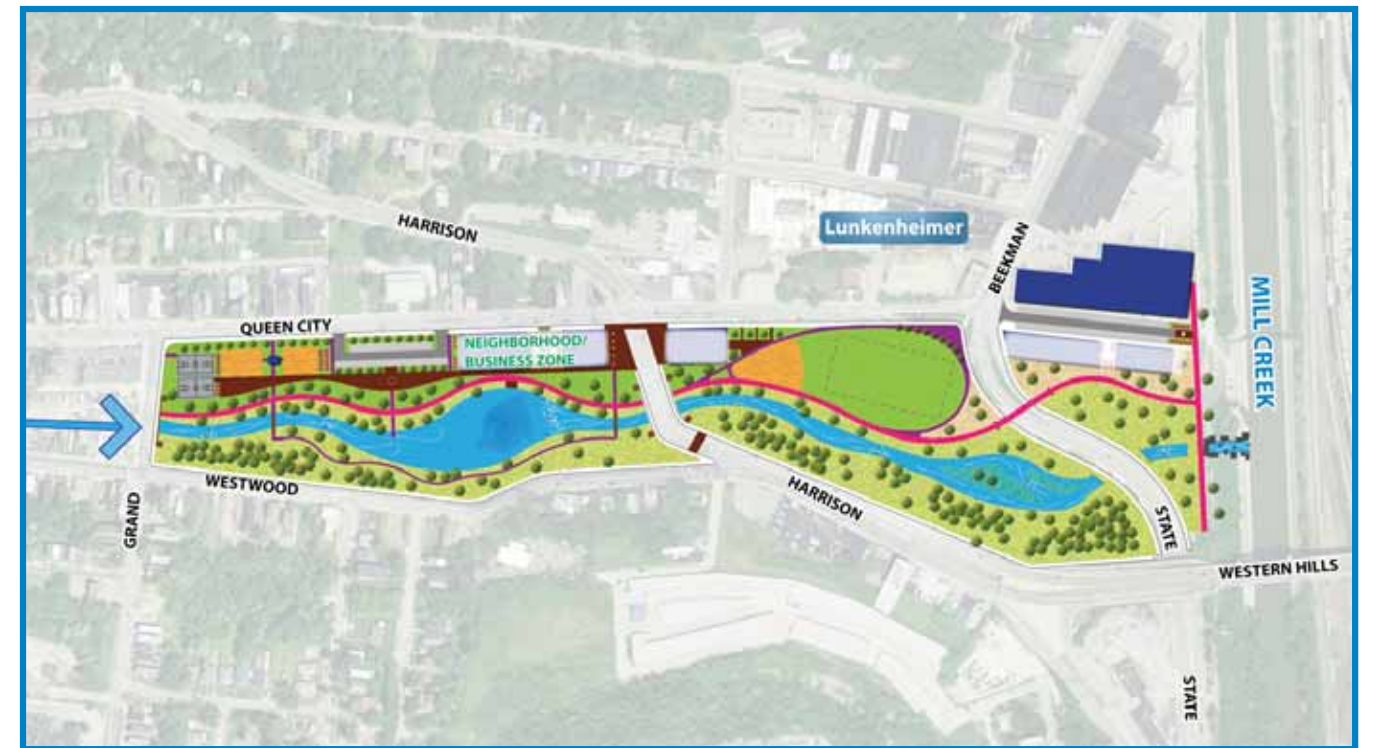
---

---

---

---

---



## TRANSPORTATION NETWORK OPPORTUNITIES: QUEEN CITY AVENUE



### Concept 1: Curb-to-Curb

1. What are the **strengths** of the concept? (please specify)

---

---

---

### Concept 2: Reduced Roadway Width

3. What are the **strengths** of the concept? (please specify)

---

---

---

### Concept 3: Local Two-Way Street

5. What are the **strengths** of the concept? (please specify)

---

---

---

2. What are the **weaknesses** of the concept? (please specify)

---

---

---

4. What are the **weaknesses** of the concept? (please specify)

---

---

---

6. What are the **weaknesses** of the concept? (please specify)

---

---

---

## TRANSPORTATION NETWORK OPPORTUNITIES: WESTWOOD AVENUE



### Concept 1: Curb-to-Curb

1. What are the **strengths** of the concept? (please specify)

---

---

---

### Concept 2: Reduced Roadway Width

3. What are the **strengths** of the concept? (please specify)

---

---

---

### Concept 3: Ecological Parkway (two-way traffic)

5. What are the **strengths** of the concept? (please specify)

---

---

---

2. What are the **weaknesses** of the concept? (please specify)

---

---

---

4. What are the **weaknesses** of the concept? (please specify)

---

---

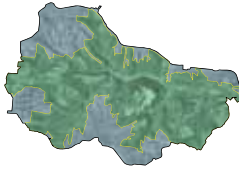
---

6. What are the **weaknesses** of the concept? (please specify)

---

---

---



## WATERSHED-WIDE OPPORTUNITIES

### GREEN PLANNING PRINCIPLES

1. Do you support using **green planning principles** to help guide future infrastructure and revitalization efforts in the Lick Run Watershed? (choose one)

**Yes**    **No**   (If not, please explain why.)

---

---

---

2. Is there anything **missing** from the draft set of green planning principles? (choose one)

**Yes**    **No**   (If yes, please explain.)

---

---

---

---

---

### TRAIL NETWORK OPPORTUNITIES

3. Do you support the concept of an **integrated network of trails** throughout the Lick Run Watershed? (choose one)

**Yes**    **No**   (If not, please explain why.)

---

---

---

4. Is there anything **missing** from the concept map showing potential trails in the Lick Run Watershed? (choose one)

**Yes**    **No**   (If yes, please explain.)

---

---

---

---

---

1. How did you hear about this workshop? (choose all that apply)

**Mailing**    **Community meeting**    **Website**  
 **Neighbor**    **Local news**    **Other** \_\_\_\_\_

2. Do you feel better informed after this meeting than before?    **Yes**    **No**

(If not, please explain why.)

---

---

3. Was the workshop: (choose one)    **too long**    **too short**    **about right**

4. What two things did you take away from this meeting?

---

---

1. How did you hear about this workshop? (choose all that apply)

**Mailing**    **Community meeting**    **Website**  
 **Neighbor**    **Local news**    **Other** \_\_\_\_\_

2. Do you feel better informed after this meeting than before?    **Yes**    **No**

(If not, please explain why.)

---

---

3. Was the workshop: (choose one)    **too long**    **too short**    **about right**

4. What two things did you take away from this meeting?

---

---

5. Given your understanding at this point, do you support MSD's investment in the alternative to the deep tunnel?

**Yes**    **No**

6. Did you attend the first Lick Run Community Design Workshop in August 2011?

**Yes**    **No**

7. Will you attend the next Lick Run Community Design Workshop in early 2012?

**Yes**    **No**

(If not, please explain why.)

---

---

8. Additional comments? (optional)



5. Given your understanding at this point, do you support MSD's investment in the alternative to the deep tunnel?

**Yes**    **No**

6. Did you attend the first Lick Run Community Design Workshop in August 2011?

**Yes**    **No**

7. Will you attend the next Lick Run Community Design Workshop in early 2012?

**Yes**    **No**

(If not, please explain why.)

---

---

8. Additional comments? (optional)



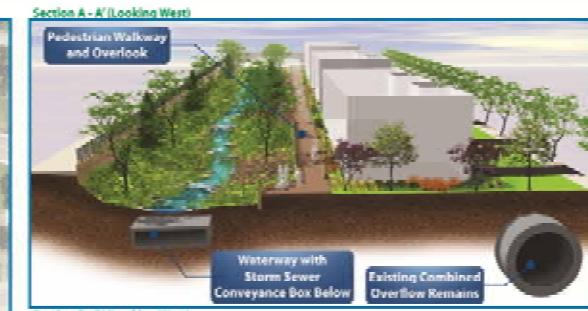
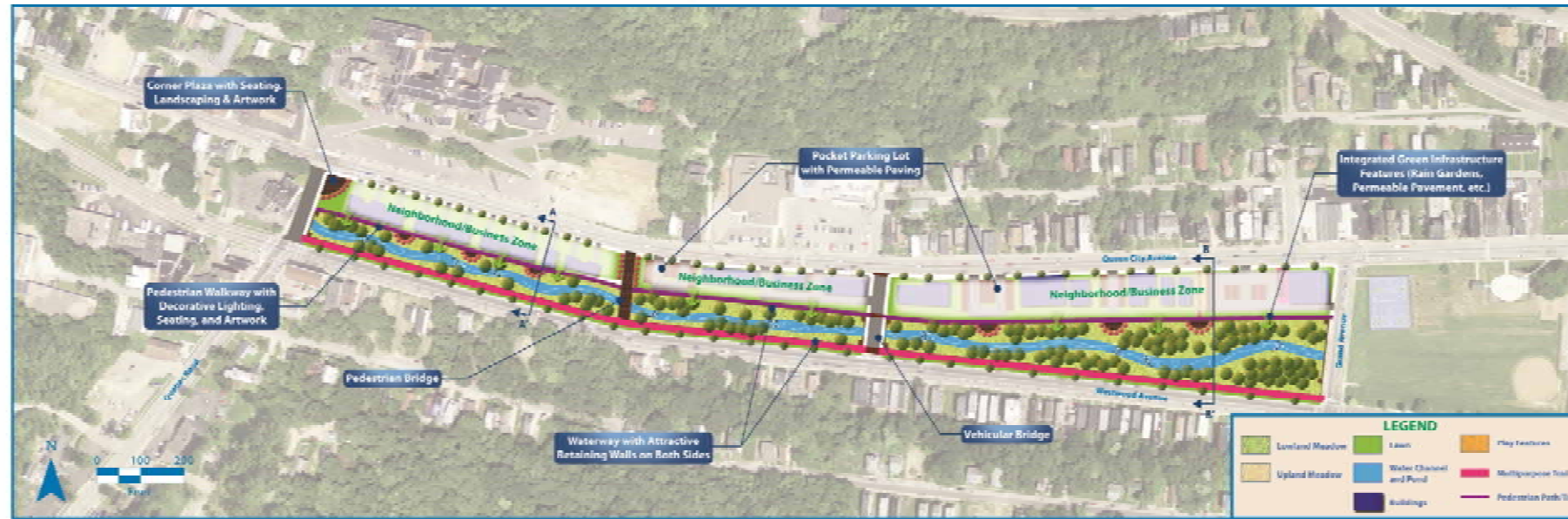


# WESTERN GATEWAY ZONE

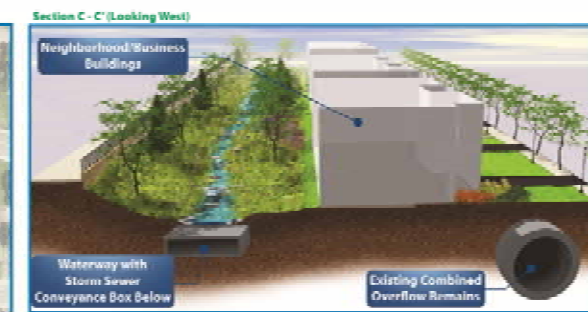
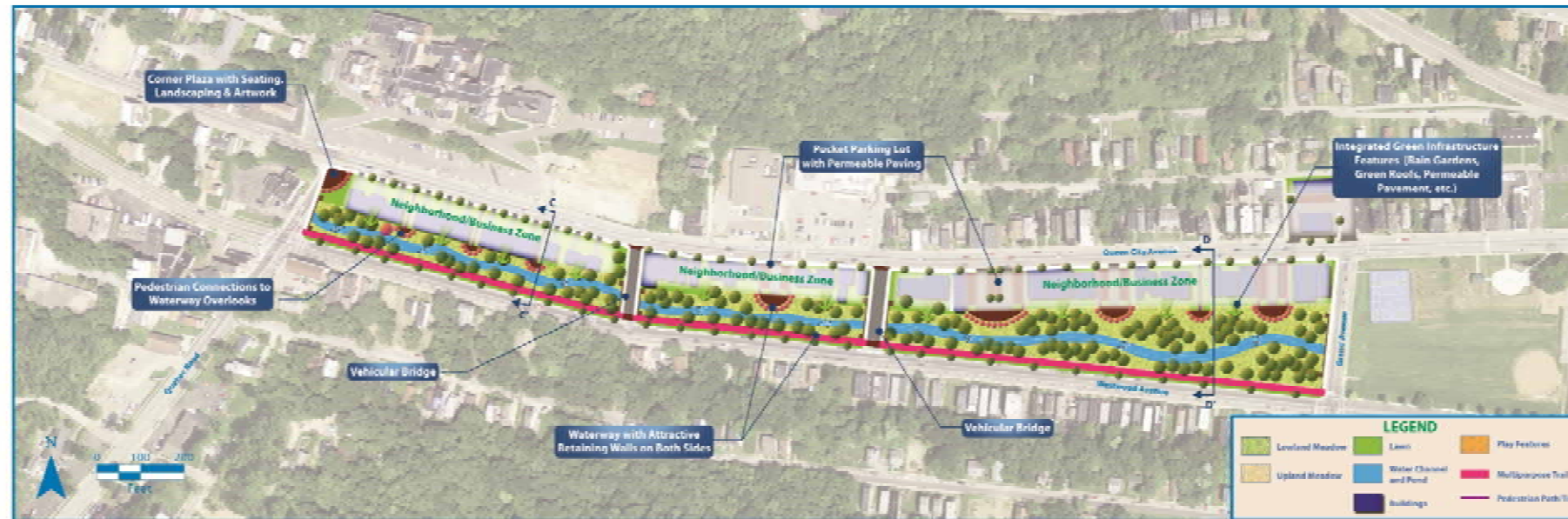
CONCEPT: Beginning the Urban Waterway



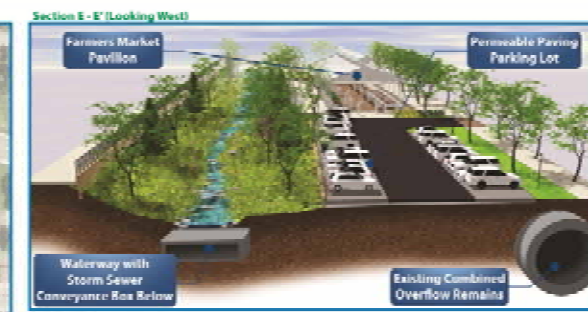
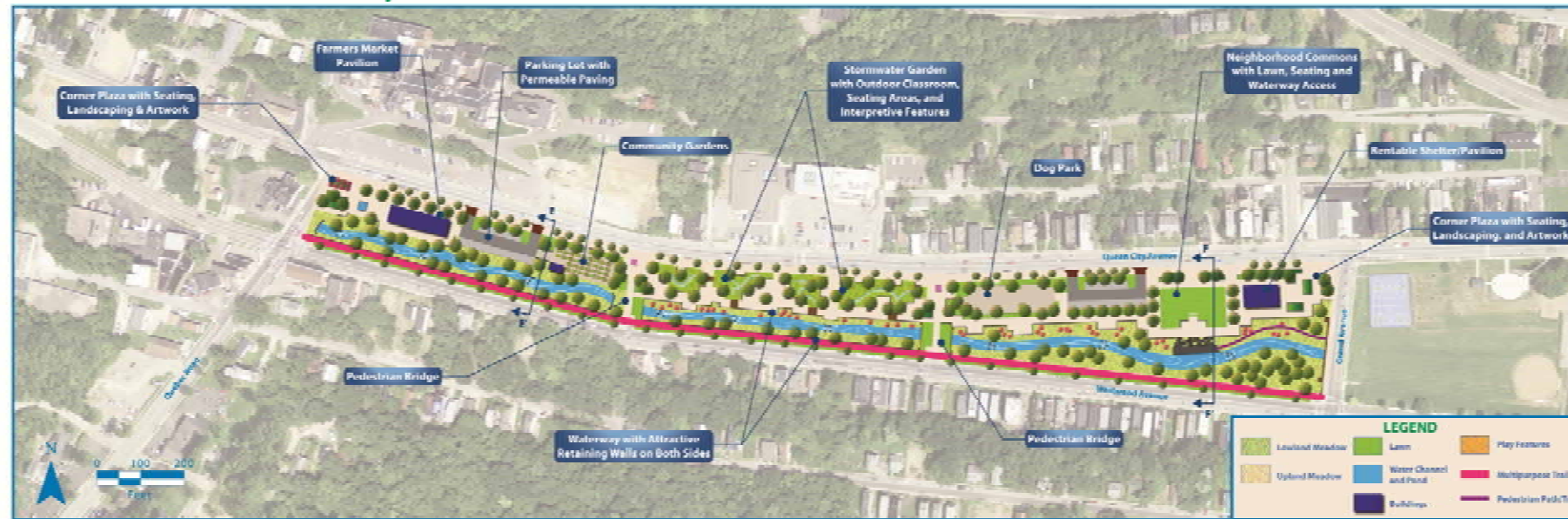
### CONCEPT 1: Waterside Pedestrian Walkway



### CONCEPT 2: Waterside Overlooks

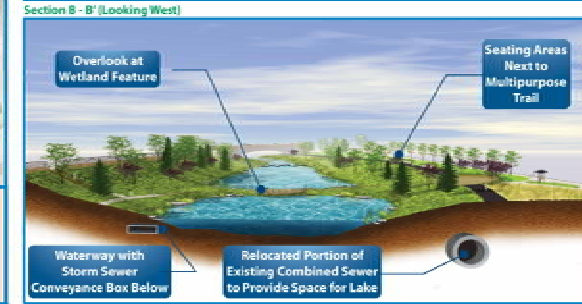
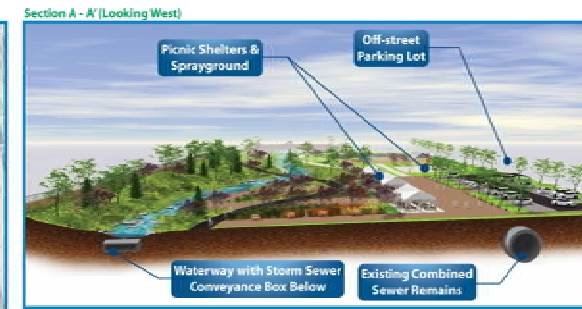
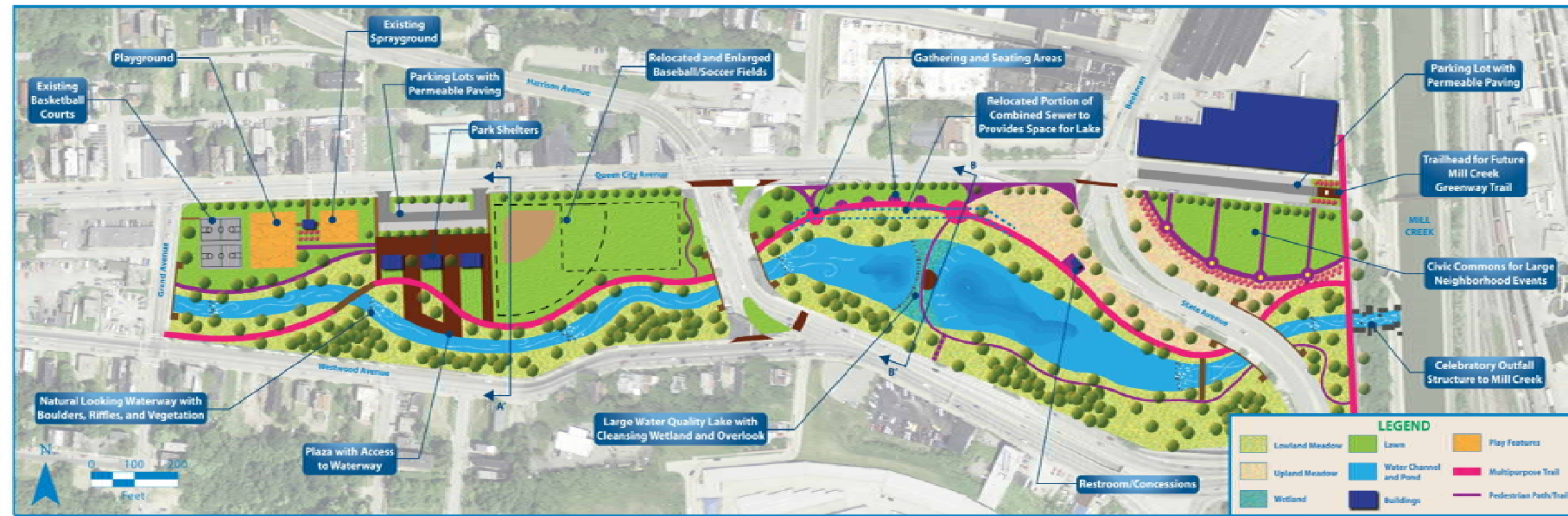


### CONCEPT 3: Community Park

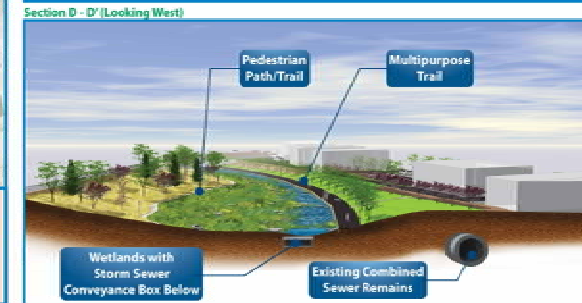
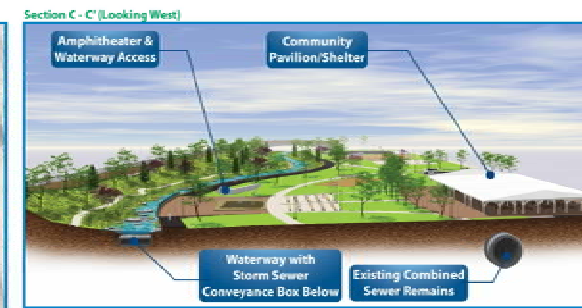
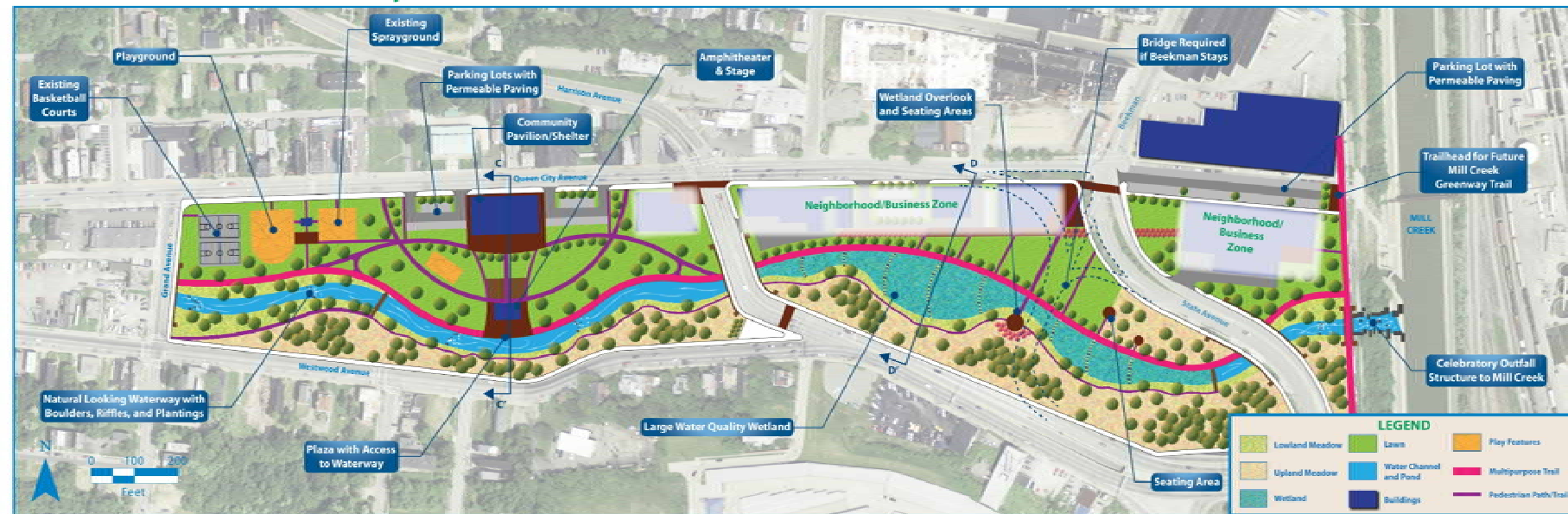




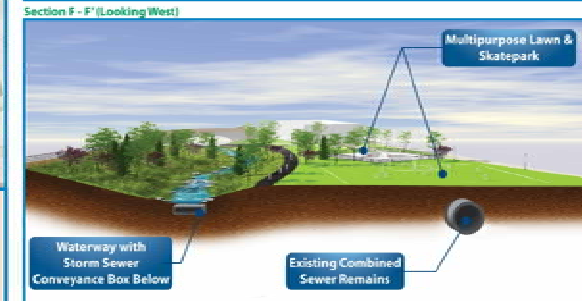
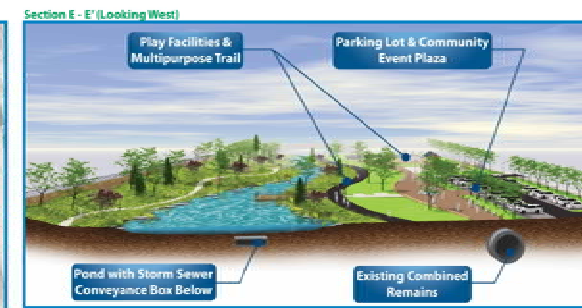
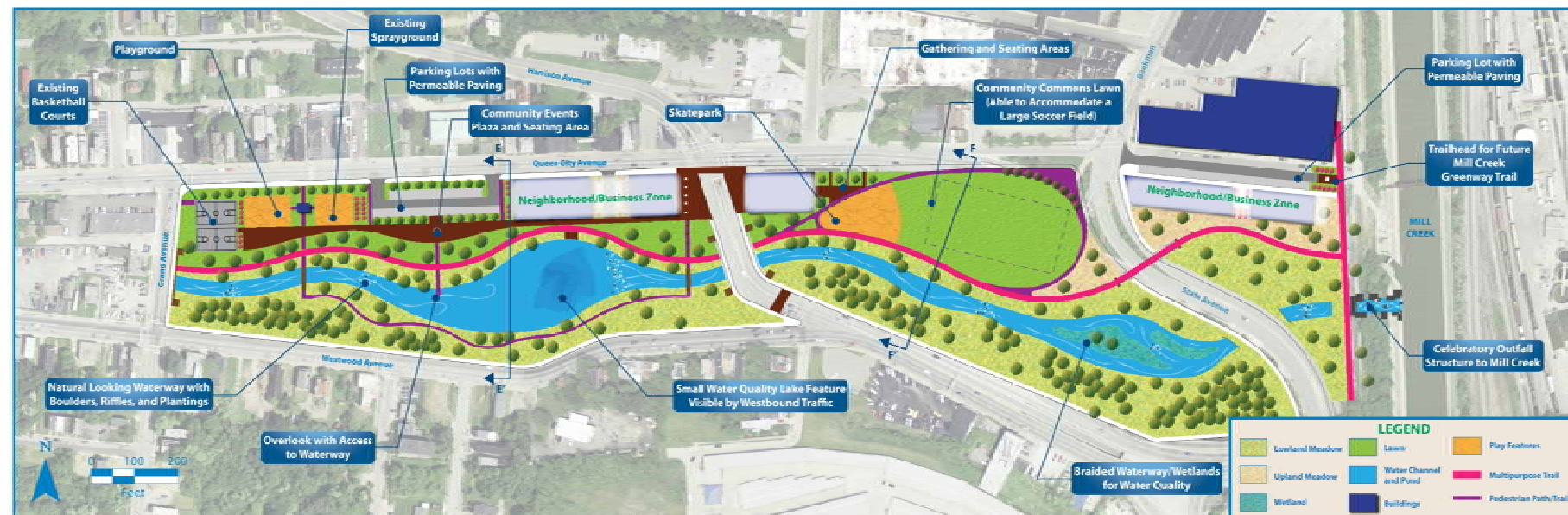
### CONCEPT 1: Community Recreation and Open Space

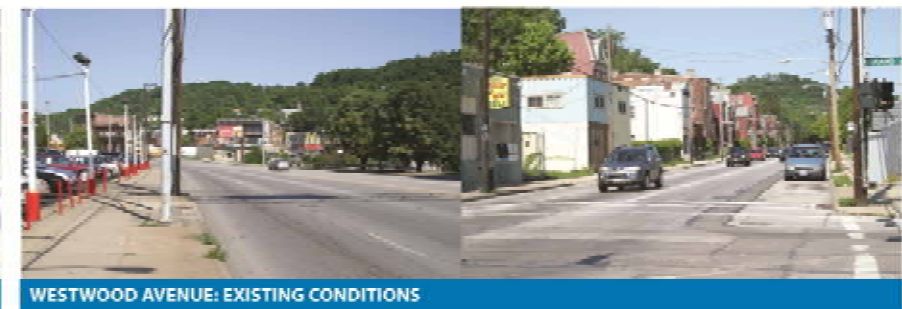
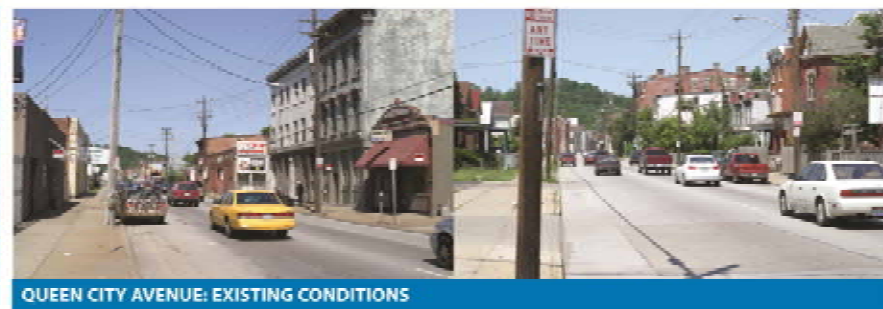
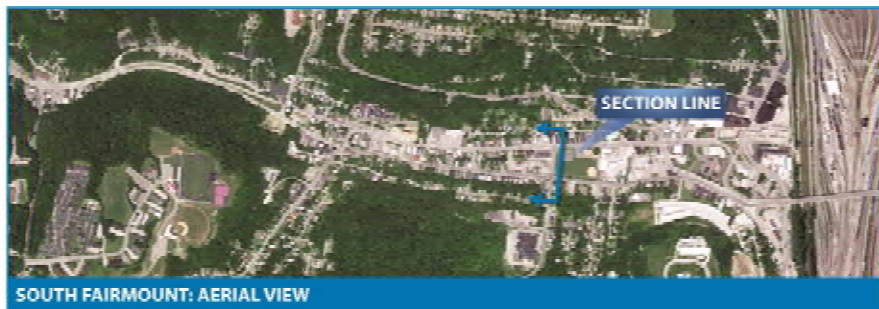


### CONCEPT 2: Community Hub and Wetland



### CONCEPT 3: Small Lake and Braided Wetlands



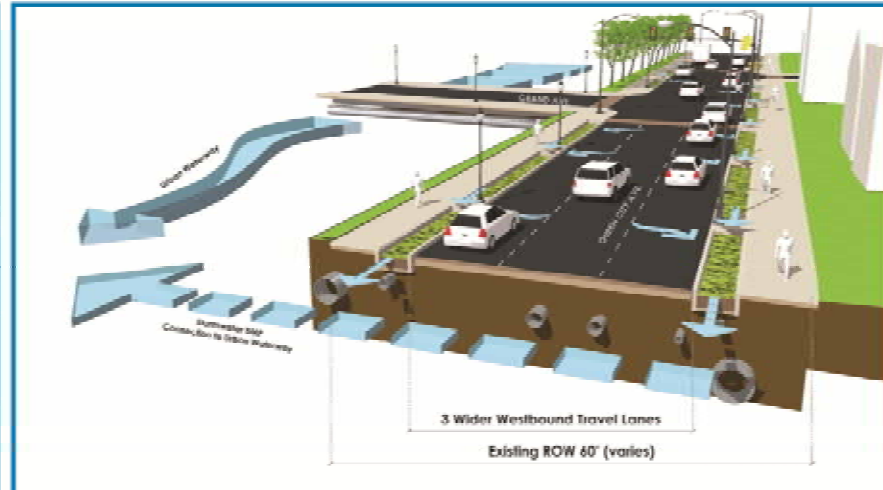


## Queen City Avenue



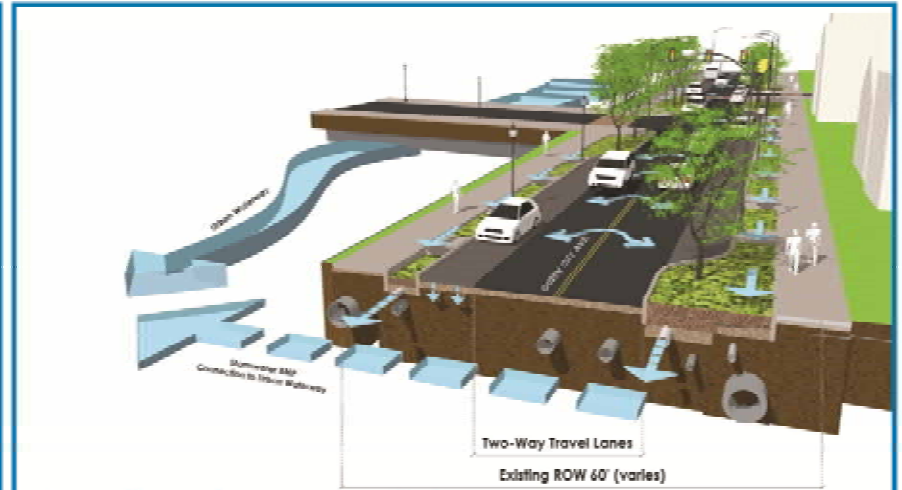
- One-way traffic remains with 4 existing lanes (3 travel, 1 parking)
- Pedestrian safety improvements (sidewalks, crosswalks & lighting)

CONCEPT 1: Curb-to-Curb Improvements (One-way Traffic)



- One-way traffic remains with 3 wider lanes
- Pedestrian safety improvements (sidewalks, crosswalks & lighting)
- Stormwater planters

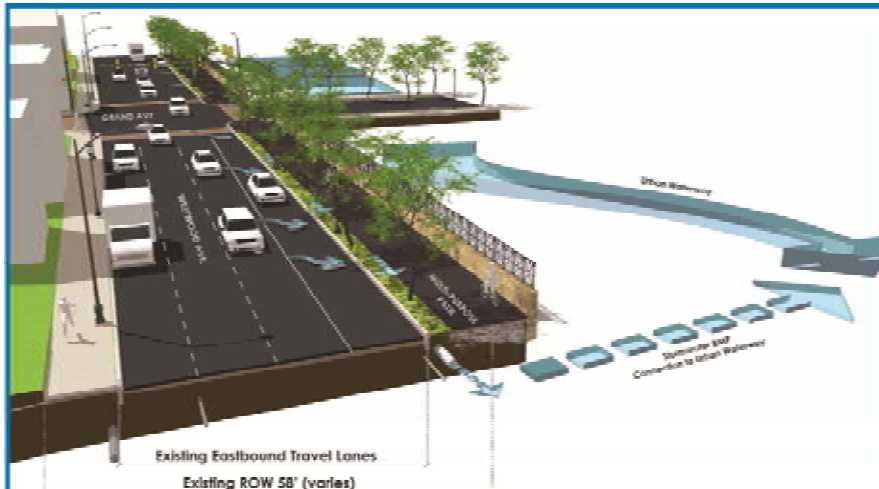
CONCEPT 2: Reduced Roadway (One-way Traffic)



- Two travel lanes and two permanent parking lanes
- Pedestrian safety improvements (sidewalks, crosswalks & lighting)
- Stormwater planters and bump-outs with street trees
- Requires improvements on Westwood Avenue

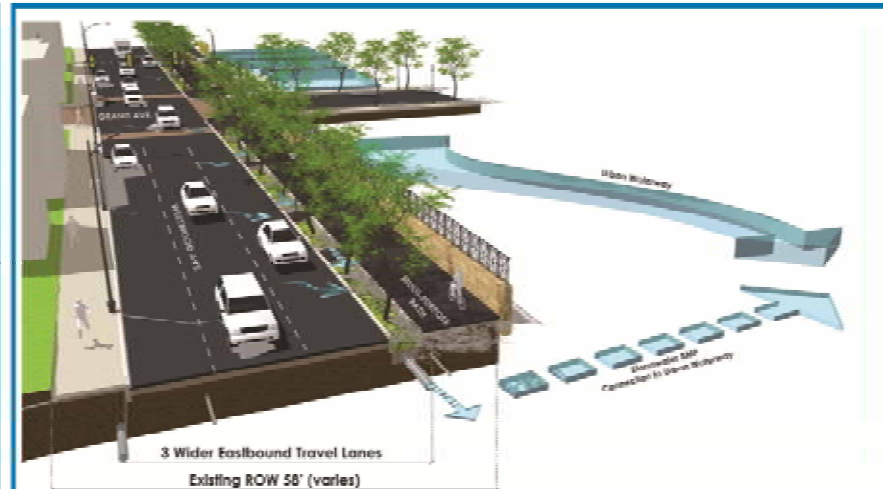
CONCEPT 3: Local Street with On-Street Parking (Two-way Traffic)

## Westwood Avenue



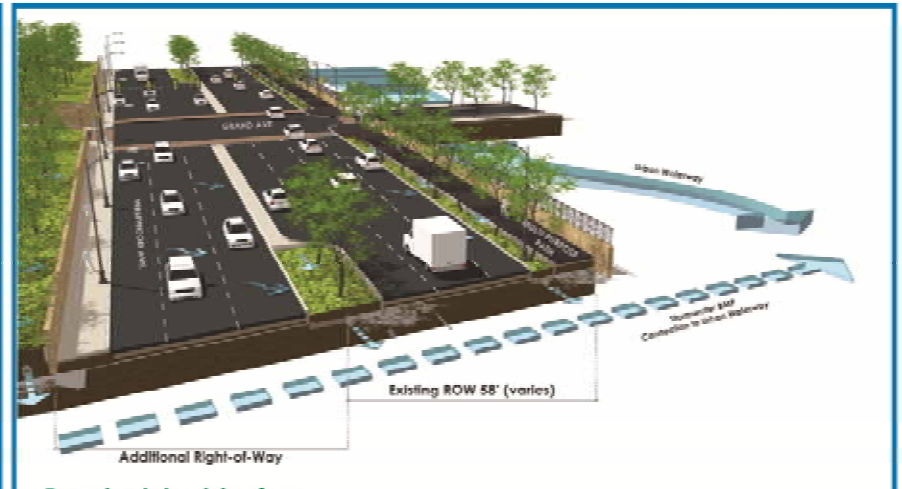
- One-way traffic remains with 4 existing lanes (3 travel, 1 parking)
- Pedestrian safety improvements (sidewalks, crosswalks & lighting)

CONCEPT 1: Curb-to-Curb Improvements (One-way Traffic)



- One-way traffic remains with 3 wider lanes
- Pedestrian safety improvements (sidewalks, crosswalks & lighting)
- Stormwater planters

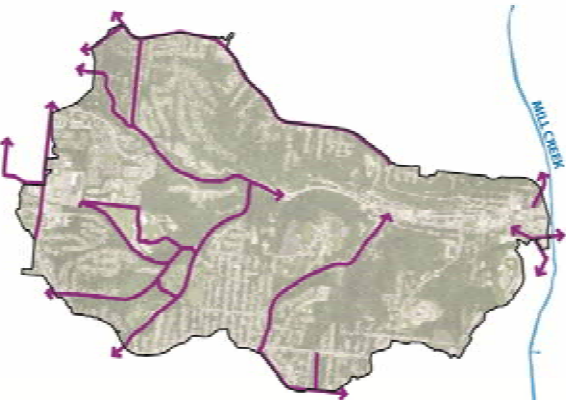
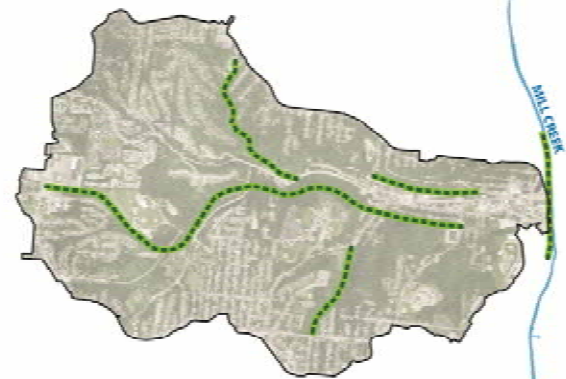
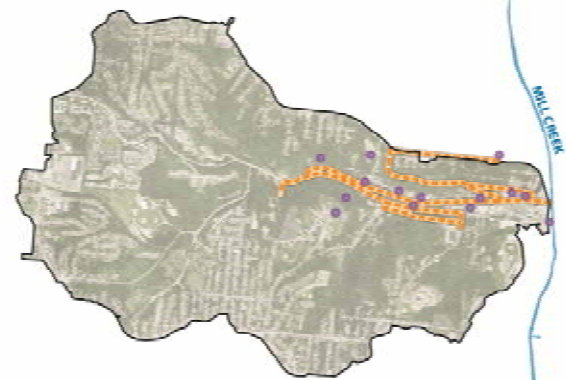
CONCEPT 2: Reduced Roadway (One-way Traffic)



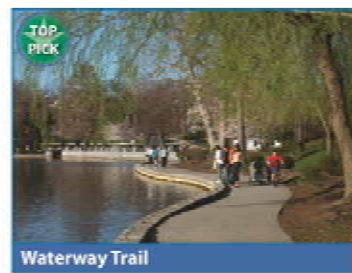
- Expands existing right-of-way
- 3 one-way lanes in each direction
- Pedestrian safety improvements (sidewalks, crosswalks & lighting)
- Stormwater planters and street trees

CONCEPT 3: Ecological Parkway (Two-way Traffic)

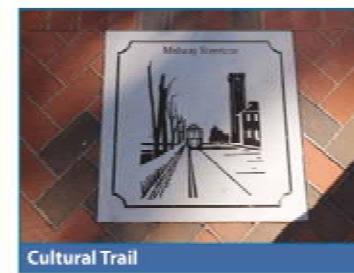
# TRANSPORTATION NETWORK OPPORTUNITIES



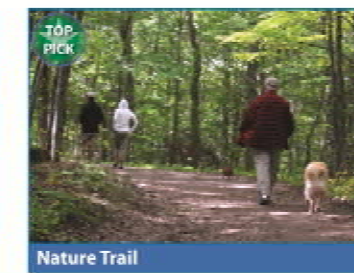
Cincinnati Bicycle Transportation Plan (June 2010)  
Plan Review & Assessment Underway



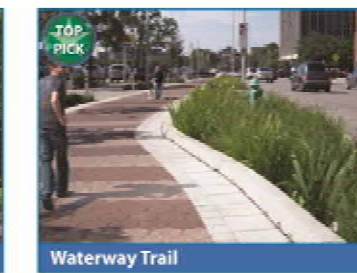
Waterway Trail



Cultural Trail



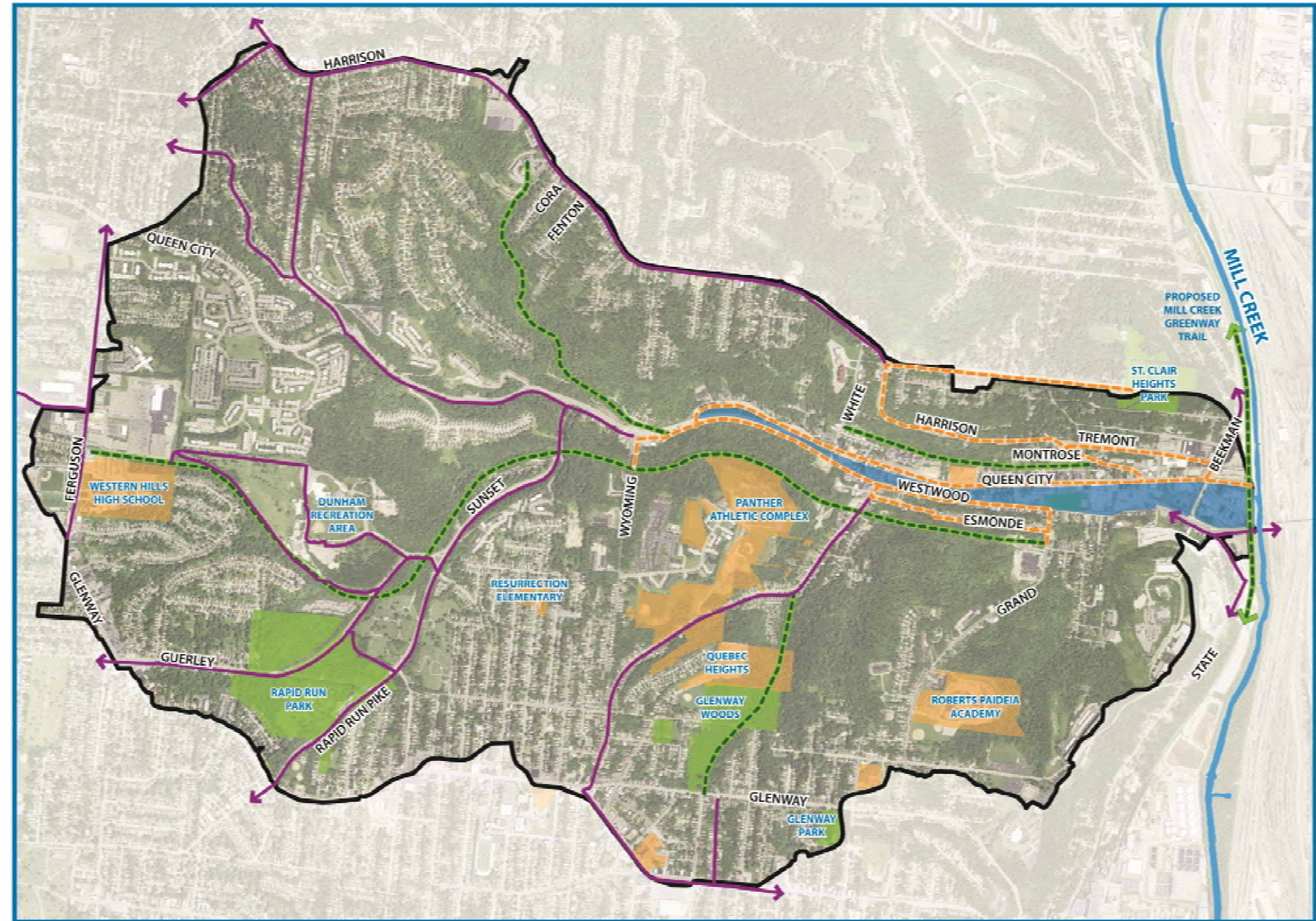
Nature Trail



Waterway Trail

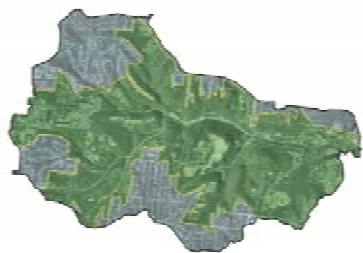


On-Street Trail



# TRAIL NETWORK OPPORTUNITIES





## WATERSHED GUIDING PRINCIPLES

Guiding principles are statements of intent that describe the conceptual direction of future growth. These principles should be used to help guide infrastructure and revitalization decisions and to foster a high-quality community with a distinct sense of place.

- Coordinate policies and leverage investment.
- Promote an integrated network of green infrastructure.
- Revitalize the economy through creation of jobs and growth opportunities for local businesses.
- Support existing communities.
- Promote a balanced mixed-use neighborhood.
- Benefit watershed communities through environmentally, socially, and economically sustainable solutions.
- Provide more transportation choices.
- Use quality design to create an attractive public/private realm.

**LICK RUN WATERSHED TRANSECT** A watershed transect is a method for organizing planning principles based on the watershed's unique physical characteristics.

### RIDGETOP COMMUNITIES




**Environmentally-sensitive development** will be used in future projects.

**Bike and walking paths** will be encouraged for new development and areas undergoing redevelopment.

Places will be connected to improve the function of the street network and create opportunities for **alternative transportation** (e.g., walking, biking, and accessing public transit).

Future revitalization efforts will build upon the **existing neighborhood fabric**.

### FORESTED HILLSIDES



The watershed's **forested hillsides** will be preserved and responsibly managed.

New construction will **minimize impacts** on the natural environment.

### COMMUNITY CORE



Future revitalization efforts will build upon the **existing neighborhood fabric**.

**Parking** in the business district will be provided by a balanced mix of on-street and surface lots integrated between buildings.

Future development will incorporate **traditional and modern architectural forms**.

The business district should represent a **vibrant live/work zone**, including basic services and reusing existing buildings where possible.

Places will be connected to improve the function of the street network and create opportunities for **alternative transportation**.

**Environmentally-sensitive development** will be used in future projects.

### OPEN SPACE CORRIDOR



The proposed urban waterway will retain **natural qualities** while complementing the surrounding urban context.

Green infrastructure features (e.g., rain garden, bioswale, trees) will be integrated throughout the proposed urban waterway corridor to improve **water quality**.

**Open gathering spaces** will allow for passive recreation and for community events.

**Active recreation facilities** will emphasize bike and pedestrian trails.

**Civic spaces** will focus on small, green areas for personal interaction, but also include common areas for community events.

# GREEN PLANNING PRINCIPLES

## Common Concerns

### How will MSD address the short- and long-term maintenance needs of proposed urban waterway and civic spaces?

Through Project Groundwork, MSD has begun planning and designing sustainable solutions to CSO reduction. Some of these projects use innovative techniques to remove stormwater and natural drainage from the combined system by creating conveyance systems that could also serve as community amenities. MSD understands the community's concern for maintenance of the conveyance systems and public spaces that may result from the Lick Run alternative. MSD is working closely with Cincinnati Parks and the Cincinnati Recreation Commission to plan for and provide maintenance needs through these public agencies.

### How are the needs of local businesses being addressed in the planning process?

Local businesses have been an active part of the dialogue in the South Fairmount community for more than a year. MSD regularly meets with the South Fairmount Business Association, and has facilitated bringing representatives from the Small Business Administration and SCORE (a non-profit that offers small businesses confidential business counseling services at no charge) to the SFBA meetings as well. In addition, the City of Cincinnati Community Development Department has committed two development officers to assist businesses in South Fairmount with their needs.

### What does Lick Run alternative have to do with transportation? How will transportation improvements be decided?

The concepts presented at Community Design Workshop #2 highlighted the central importance of transportation planning to the long-term outcomes of the Lick Run Alternative project. The transportation network opportunities presented at Community Design Workshop #2 were concepts only, and were developed to help the community more clearly understand the potential short- and long-term opportunities in the Lick Run Watershed that may be achieved through public partnerships and private investments. The concepts will continue to go through additional analysis, review, and refinement by MSD and partner agencies.



## Lick Run Community Design Workshop #2

On Wednesday, October 26, 2011, the Metropolitan Sewer District of Greater Cincinnati (MSD) hosted its second of three "Community Design Workshops" at Gilbert A. Dater Montessori to gather public input on the proposed Lick Run Alternative project.

### What's the Lick Run Alternative?

The Lick Run project is a series of underground storm sewers and natural, above ground waterways to transport stormwater and natural drainage to the Mill Creek. This storm sewer separation project would eliminate about 800 million gallons of combined sewer overflows (CSOs) annually. It is an "alternative" to a deep, underground storage tunnel and enhanced high-rate treatment facility.

The central element of this alternative project would be an urban waterway in South Fairmount between Queen City and Westwood avenues east of White Street.

### Focus of Community Design Workshop #2

The workshop featured an overview presentation and small group work sessions to review and discuss design concepts for the proposed urban waterway in South Fairmount. The workshop also covered transportation network opportunities, green planning principles and trail network opportunities. All were developed with input from Community Design Workshop #1. The results of Community Design Workshop #2 are summarized inside.

### What's Next?

The information from the first and second workshops will be used to prepare a preliminary Lick Run Master Plan, to be unveiled at the Lick Run Community Design Workshop #3, anticipated in February 2012. The Master Plan will contain the refined design concept for the proposed urban waterway, as well as future guidelines and principles for the entire Lick Run watershed.

### What if I missed the first two meetings?

We encourage your participation and input at any stage in the process.

### Additional Information

For more information about the Lick Run Project, visit: [www.projectgroundwork.org/lickrun](http://www.projectgroundwork.org/lickrun). You can also contact MaryLynn Lodor at (513) 244-5335 or send an e-mail to [MSD.Communications@cincinnati-oh.gov](mailto:MSD.Communications@cincinnati-oh.gov).

## Major Findings from the Workshop:

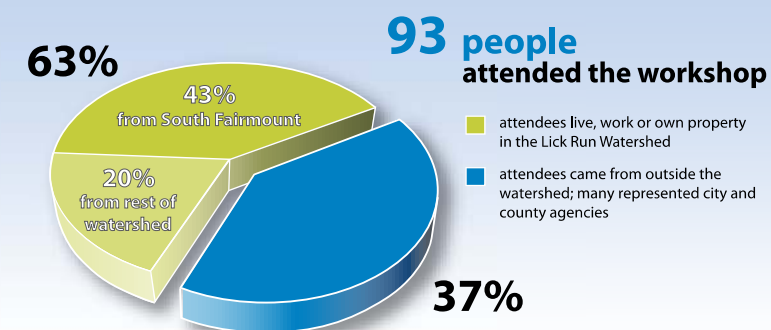
### Small Groups Work Session Feedback:

- The urban waterway should provide **ecological benefits, wildlife habitat**, and opportunities for **environmental education**.
- The **Neighborhood/Business Zone** should **promote a walkable, mixed-use business district** by improving pedestrian safety and addressing concerns about high-speed traffic through the corridor.
- Future plans for civic spaces and the urban waterway should place **public safety** and **long-term maintenance** as high priorities.
- Near and long-term **transportation improvements** should focus on improving **pedestrian safety** and addressing **traffic and parking issues**.

## LICK RUN WATERSHED

RESULTS OF COMMUNITY INPUT  
COMMUNITY DESIGN WORKSHOP #2

OCTOBER 26, 2011



### Exit Survey Results:

**78%** of respondents support the proposed Lick Run Alternative, compared to 16% who support the deep tunnel and 6% who are unsure. (54% of attendees responded to this question)

**54%** of respondents attended the first workshop. (58% of attendees responded)

**89%** of respondents felt better informed after attending the second workshop. (60% of attendees responded)

**98%** of respondents said they will attend the third workshop. (54% of attendees responded)

The following is a summary of community feedback from the small groups work session...



**Western Gateway Zone**

- The beginning of the urban waterway should provide ecological benefits (e.g., water quality features) and wildlife habitat, while incorporating opportunities for environmental education.
- Public uses (e.g., parking areas, trail networks, gateways) should be safe and well-maintained.
- Civic amenities could include greenspaces, gathering areas, biking facilities, trailhead parking, and Metro access.

**Narrow Channel Zone**

- The urban waterway should be narrow with green spaces and retaining walls on both sides and should complement the surrounding urban environment.
- The urban waterway should contain natural stone, vegetation, and in-stream features (e.g., pools and riffles) to improve water quality.
- The Neighborhood/Business Zone should promote a walkable, mixed-use business district by improving pedestrian safety and addressing concerns about high-speed traffic through the corridor.
- Civic amenities could include a pedestrian walkway north of the urban waterway, complementary on-street/off-street parking areas, and a multipurpose trail south of the urban waterway. These amenities should connect people with the urban waterway, where possible, and enhance the pedestrian experience of the open space network.

**Eastern Gateway Zone**

- The urban waterway should vary in width and meander through a well-vegetated floodplain.
- The location of a large-scale water quality feature (e.g., a lake and/or wetland) should make a dramatic statement by strengthening neighborhood identity and pride, and serving as a visual anchor for visitors entering the corridor.
- A more celebrated, concentrated recreation area should build upon existing facilities and allow for a variety of activity zones.
- Civic amenities could include additional amenities like multi-purpose trails, trailheads, access to the future Mill Creek Greenway Trail, sports fields, and civic gathering spaces.
- The Neighborhood/Business Zone should strive to balance the business district in the Narrow Channel Zone with well-integrated recreation areas, business areas, and community spaces.

**Near-term Opportunities**

Near-term transportation improvements should focus on improving pedestrian safety and addressing concerns about high-speed traffic through the corridor.



Queen City Avenue  
"Reduced Roadway Width" Concept

**Long-term Opportunities**

Long-term transportation opportunities could convert Westwood Avenue to an "Ecological Parkway" and Queen City Avenue to a two-way, community-oriented roadway conducive to a pedestrian-friendly, mixed-use urban neighborhood.



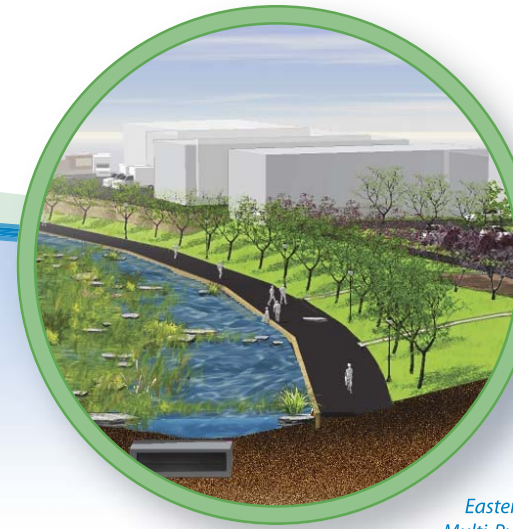
Westwood Avenue  
"Ecological Parkway" Concept



Western Gateway Zone  
Daylighting Feature Concept



Narrow Channel Zone  
Promenade Concept



Eastern Gateway Zone  
Multi-Purpose Trail Concept

These draft design concepts were developed by MSD with input from the community and public/private partners to show potential design alternatives for the proposed urban waterway in South Fairmount. The draft concepts were presented for public review at the Lick Run Community Design Workshop #2 on October 26, 2011 and will continue to go through additional analysis, review and refinement by MSD with input from public/private partners and the community prior to integration into a Lick Run Master Plan. MSD plans to submit the Master Plan to the Board of County Commissioners as part of a potential recommended Lower Mill Creek Partial Remedy for CSO reduction in the Lower Mill Creek.