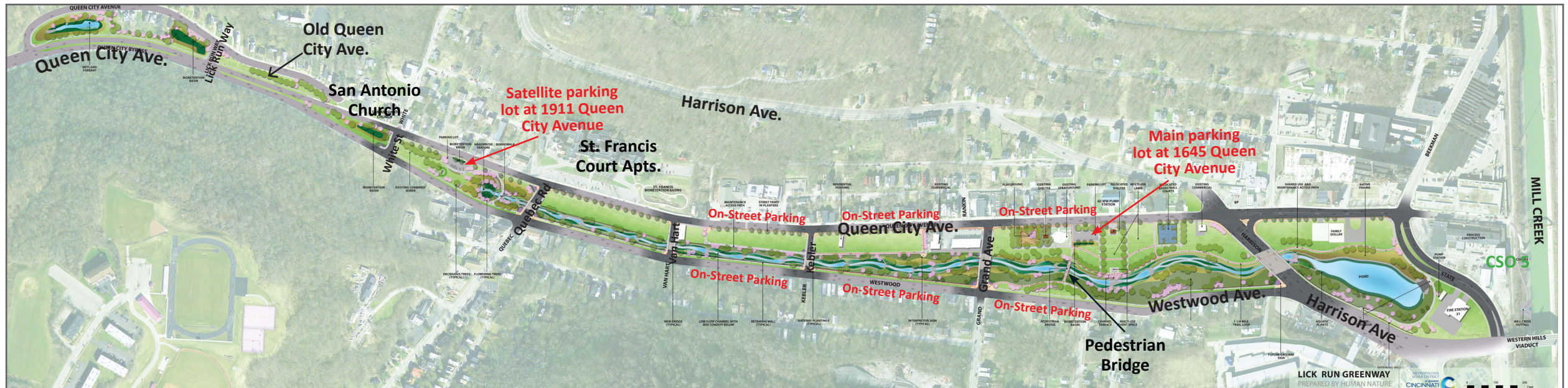


Lick Run Greenway

Cincinnati's newest urban recreational space, the Lick Run Greenway, is open from 6:00-10:00 a.m. daily. On the surface, the Lick Run Greenway looks like a park with a stream running through it, but it's also a stormwater management project that helps control sewer overflows into the Mill Creek.

Located in the Cincinnati neighborhood of South Fairmount, the Greenway features a brand-new Cincinnati Recreation Commission (CRC) area with a playground, spray park, basketball courts, two shelters, and a stage area. In addition, there are walking/biking paths along a mile-long urban stream and educational signage. During the warmer months, programming is offered for the community.

Parking is available in the main lot at 1645 Queen City Avenue (45214), a satellite lot at 1911 Queen City Avenue (45214), and along the south side of Westwood Avenue, among other locations. For more information about this area, please visit www.projectgroundwork.org/lickrun. Can't visit in person? Check out the Lick Run Greenway Heritage Trail at www.projectgroundwork.org/lickrun.



The Lick Run Greenway is owned and operated by the Metropolitan Sewer District of Greater Cincinnati (MSD).