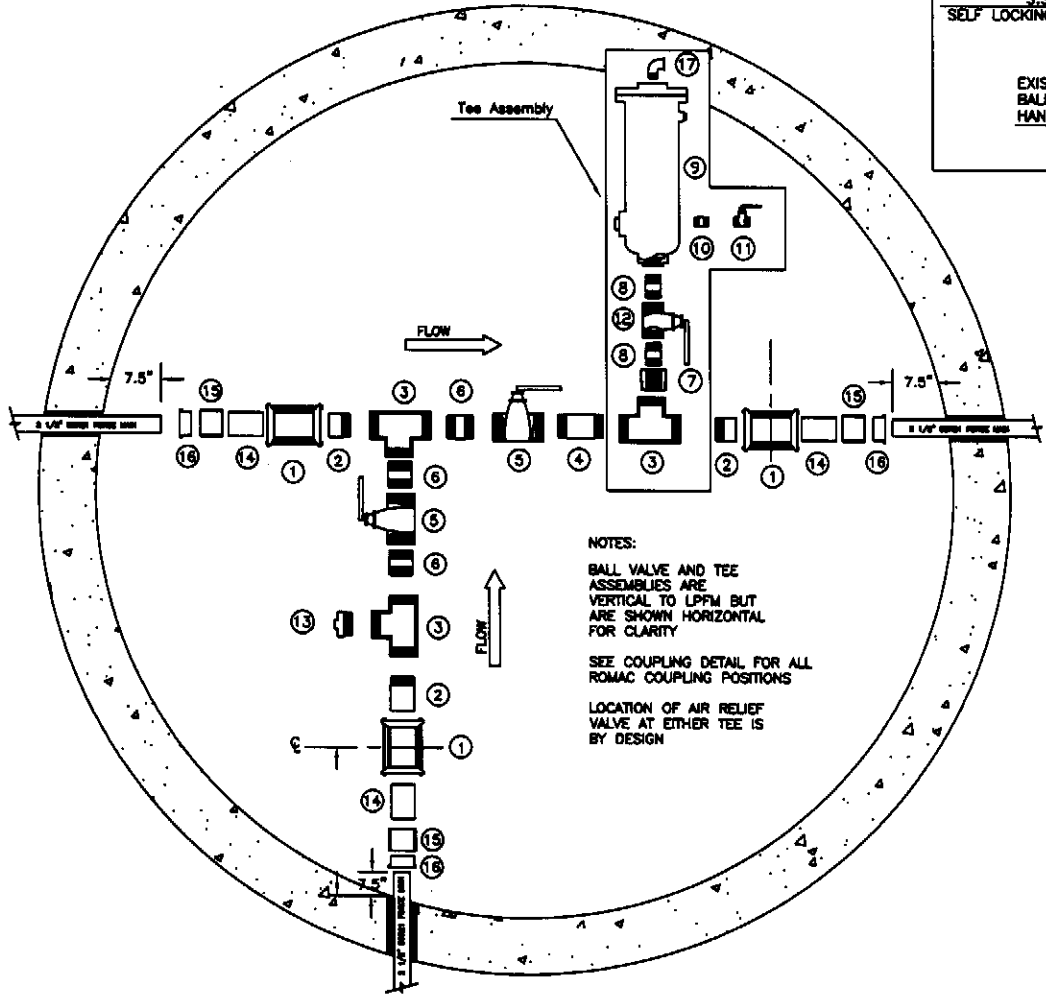


- NOTES
- ① ROMAC PART # 511-3.50 X 3.50 X 7SSPE WITH NBR GASKETS
  - ② 3" X 21" PIPE (ONE END THREADED)
  - ③ 3"X3"X3" THREADED TEE (150 PSI)
  - ④ 3" X 7-1/4" PIPE (BOTH ENDS THREADED)
  - ⑤ 3" S.S. STREAM FLOW BALL VALVE MODEL BV150SS3FP S.S. FULL PORT S.S. BALL VALVE THREADED HANDLE CUT TO FIT MAXIMUM CLEARANCE 1" REMOVE LATCH LOCK
  - ⑥ 3" X 4" NIPPLE (BOTH ENDS THREADED)
  - ⑦ 3" TO 2" BUSHING
  - ⑧ 2" X 3" NIPPLE (BOTH ENDS THREADED)
  - ⑨ AIR RELIEF VALVE ~~APCC 115-1 REQUIRED~~ ~~APCC 115-2 REQUIRED~~ (AS REQUIRED) SANDBLASTED AND COATED COAL TAR EPOXY C-200 SHERWIN WILLIAMS OF EQUAL
  - ⑩ 1" X CLOSE S.S. NIPPLE
  - ⑪ 1" FULL PORT S.S. BALL VALVE
  - ⑫ 2" S.S. STREAM FLOW BALL VALVE MODEL BV150SS3FP S.S. FULL PORT S.S. BALL VALVE THREADED HANDLE MODIFIED (SEE HANDLE DETAIL) MAXIMUM CLEARANCE 1" REMOVE LATCH LOCK
  - ⑬ 3" S.S. PIPE PLUG
  - ⑭ 3" X 10" SDR21 PVC PIPE
  - ⑮ 3" SCHEDULE 40 PVC SOCKET GLUE COUPLING
  - ⑯ 3" X (1" TO 2-1/2") SCHEDULE 40 PVC SOCKET BUSHING
  - ⑰ S.S. STREET 90 ~~APCC 115-1 REQUIRED~~ ~~APCC 115-2 REQUIRED~~

Air Release Valves shall be Vent-Tech or Vent-O-Mat.

Air Release Valves shall be Vent-Tech or Vent-O-Mat.



EXPLODED TOP VIEW  
NOT TO SCALE

GENERAL NOTES:  
\* ALL MATERIALS MUST BE 304 STAINLESS STEEL SCHEDULE 40 (EXCEPT AS NOTED)

THE  
METROPOLITAN SEWER DISTRICT  
OF  
GREATER CINCINNATI  
1" TO 2 1/2" LOW  
PRESSURE FORCE MAIN  
RIGHT TEE AIR RELIEF CHAMBER DETAIL